

DATE: 12 August 2025
DESIGNER: Cynthia Al Fata
PROJECT No: C25012
PROJECT NAME: Pope Hill Public Lighting



Lighting to EN-13201 1-5 & Cork City Council lighting standards
Estate road lighting to class P4, Pedestrian path lighting to P4
3000k - estate
Dimming to U14 regime 35/18
A) Cree Energy Uno TRSA 02 200 4L 2.74klm, 19W CLO
B) Cree Energy Uno TRSA 02 150 2L 0.98klm, 8W CLO
C) Cree Energy Uno TRSA 02 200 8L 5.49KLM, 36W CLO
D) Existing Urbis Schreder Axia 5.23klm
E) Existing Urbis Schreder Axia 3.29klm

c/w nema 7 pin socket & photocell
6m columns - estate

Spine road and Pope's Road are lit to class P3
Branch roads and footpath areas are lit to class P4

Outdoor Lighting Report

Luminaires 43A, 2A, 42A, 31A, 38A, 44A, 4A, 39A, 40A, 41A, 45A, 33A, 49A, 48A, 37A, 50A, 51A, 52A, 70B, 62A, 61A, 69A, 65A, 64A, 63A, 56A, 55A, 57A, 58A, 54A require back light shields.

Luminaires 2A, 42A, 39A, 72B, 73B, 40A, 48A, 75 B, 49A, 70B, 69A, 62A, 61A require hinged columns.

Layout Report

General Data

Dimensions in Metres Angles in Degrees

Calculation Grids

ID	Grid Name	X	Y	X' Length	Y' Length	X' Spacing	Y' Spacing
1	Grid 1	226.03	482.94	322.80	148.55	1.49	1.49
2	Branch Road 1	271.25	493.88	63.60	95.52	2.27	2.73
3	Spine Road West	263.92	491.11	132.75	113.41	1.49	1.49
4	Branch Road 2	330.68	528.28	48.72	65.99	0.96	2.20
5	Branch Road 3	383.39	510.37	65.64	91.46	2.63	3.66
6	Branch Road 4	448.68	522.10	86.56	71.91	4.33	1.60
7	East Spine Road	396.77	538.77	109.31	73.05	1.50	1.49
8	Pope Road	230.89	485.10	41.57	27.43	1.48	1.71
9	Footpath A	305.47	556.36	53.68	37.05	1.49	1.48

Luminaires

Luminaire A Data



Supplier	Cree Lighting
Type	TRSA-02-200-4L30819W
Lamp(s)	8lu4L19W3K
Lamp Flux (klm)	2.74
File Name	TRSA-02-200-4L-308 19W-1408-QL20-S05 .IES
Maintenance Factor	0.80
Imax70,80,90(cd/klm)	462.5, 41.7, 0.0
No. in Project	67

Luminaire B Data



Supplier	Cree Lighting
Type	TRSA-02-150-2L308 8W
Lamp(s)	4Du2L8W3K
Lamp Flux (klm)	0.98
File Name	TRSA-02-150-2L-308 8W-481-QL21-S03.IES
Maintenance Factor	0.80
Imax70,80,90(cd/klm)	476.2, 35.8, 0.0
No. in Project	4

Luminaire C Data



Supplier	Cree Lighting
Type	TRSA-02-200-8L30836W
Lamp(s)	16lu8L36W3K
Lamp Flux (klm)	5.49
File Name	TRSA-02-200-8L-308 36W-1408-QL20-S05 .IES
Maintenance Factor	0.80
Imax70,80,90(cd/klm)	462.5, 41.7, 0.0
No. in Project	2

Luminaire D Data



Supplier	Urbis Schreder
Type	AXIA 3.1 5266 Integrated lenses 16 OSLO N SQUARE GIANT@870mA
Lamp(s)	16 OSLO N SQUARE GIANT@870mA WW 730 230V
LampFlux(klm)/Colour	5.23 WW 3000K/70
File Name	AXIA 3.1 5266 16 OSLO N SQUARE GIANT 870mA WW 730 44W 429092 Integrated I...
Maintenance Factor	0.80
Imax70,80,90(cd/klm)	1142.4, 192.6, 0.0
No. in Project	1

Luminaires



Luminaire E Data

Supplier	Urbis Schreder
Type	AXIA 3.1 5266 Integrated lenses 16 OSLO N SQUARE GIANT@500mA
Lamp(s)	16 OSLO N SQUARE GIANT@500mA WW 730 230V 01-37-043
LampFlux(klm)/Colour	3.29 WW 3000K/70
File Name	AXIA 3.1 5266 16 OSLO N SQUARE GIANT 500mA WW 730 25.5W 429092 Integrated ...
Maintenance Factor	0.80
Imax70,80,90(cd/klm)	1142.4, 192.6, 0.0
No. in Project	1

Layout

ID	Type	X	Y	Height	Angle	Tilt	Cant	Out-reach	Target X	Target Y	Target Z
1	A	0.00	0.00	0.00	281.00	0.00	0.00	0.50			
2	A	282.57	512.25	6.00	281.00	0.00	0.00	1.00			
3	A	0.00	0.00	0.00	281.00	0.00	0.00	0.50			
4	A	308.94	541.46	6.00	9.00	0.00	0.00	1.00			
5	A	0.00	0.00	0.00	0.00	0.00	0.00	0.00			
6	A	0.00	0.00	0.00	135.00	0.00	0.00	0.50			
7	A	0.00	0.00	0.00	104.00	0.00	0.00	0.50			
8	A	0.00	0.00	0.00	103.00	0.00	0.00	0.50			
9	A	0.00	0.00	0.00	292.00	0.00	0.00	0.50			
10	A	0.00	0.00	0.00	230.00	0.00	0.00	0.50			
11	A	0.00	0.00	0.00	6.00	0.00	0.00	0.50			
12	A	0.00	0.00	0.00	8.00	0.00	0.00	0.50			
13	A	0.00	0.00	0.00	187.00	0.00	0.00	0.50			
14	A	0.00	0.00	0.00	107.00	0.00	0.00	0.50			
15	A	0.00	0.00	0.00	183.00	0.00	0.00	0.50			
16	A	0.00	0.00	6.00	180.00	0.00	0.00	0.50			
17	A	0.00	0.00	0.00	228.00	0.00	0.00	0.50			
18	A	0.00	0.00	6.00	102.00	0.00	0.00	0.50			
19	A	0.00	0.00	0.00	189.00	0.00	0.00	0.50			
20	A	0.00	0.00	0.00	311.00	0.00	0.00	0.50			
21	A	0.00	0.00	0.00	281.00	0.00	0.00	0.50			
22	A	0.00	0.00	0.00	219.00	0.00	0.00	0.50			
23	A	0.00	0.00	0.00	153.00	0.00	0.00	0.50			
24	A	0.00	0.00	0.00	4.00	0.00	0.00	0.50			
25	A	0.00	0.00	0.00	7.00	0.00	0.00	0.50			
26	A	0.00	0.00	0.00	8.00	0.00	0.00	0.50			
27	A	0.00	0.00	0.00	191.00	0.00	0.00	0.50			
28	B	0.00	0.00	0.00	275.00	0.00	0.00	0.50			
29	A	0.00	0.00	0.00	188.00	0.00	0.00	0.50			
30	A	0.00	0.00	6.00	109.00	0.00	0.00	0.50			
31	A	313.08	520.95	6.00	10.00	0.00	0.00	1.00			
32	A	0.00	0.00	0.00	281.00	0.00	0.00	0.50			
33	A	369.69	556.54	6.00	101.00	0.00	0.00	1.00			
34	A	390.52	600.35	6.00	269.00	0.00	0.00	1.00			
35	A	466.84	603.25	6.00	283.00	0.00	0.00	1.00			
36	A	317.88	501.63	6.00	101.00	0.00	0.00	1.00			

Layout Continued

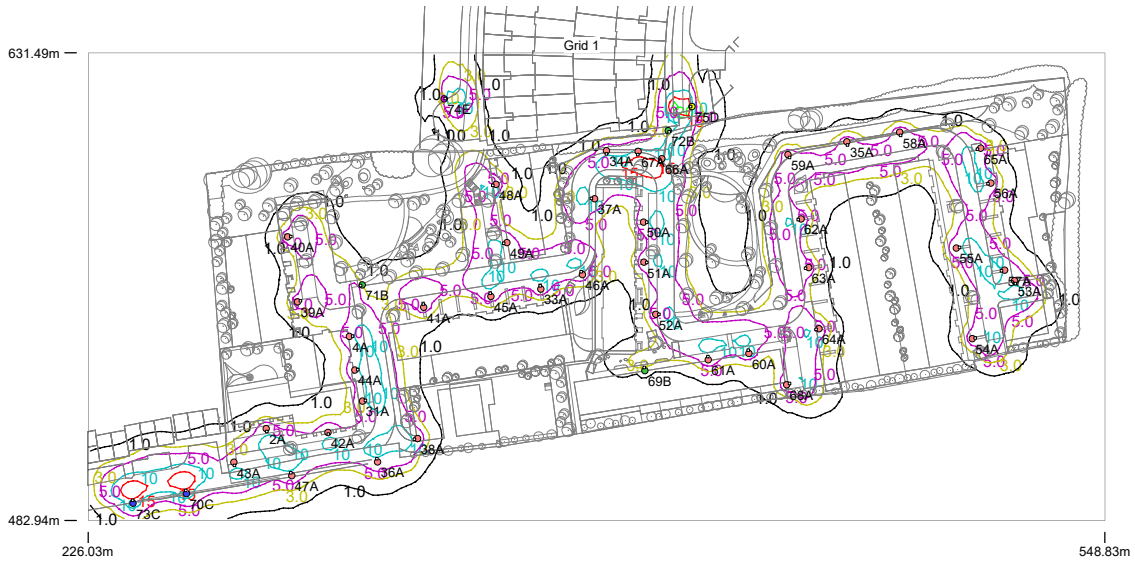
ID	Type	X	Y	Height	Angle	Tilt	Cant	Out-reach	Target X	Target Y	Target Z
37	A	386.80	585.16	6.00	176.00	0.00	0.00	1.00			
38	A	330.53	509.06	6.00	191.00	0.00	0.00	1.00			
39	A	292.43	552.49	6.00	14.00	3.00	0.00	1.00			
40	A	289.31	573.08	6.00	8.00	0.00	0.00	1.00			
41	A	332.55	550.75	6.00	100.00	0.00	0.00	1.00			
42	A	302.12	510.99	6.00	281.00	0.00	0.00	0.50			
43	A	272.31	501.55	6.00	281.00	0.00	0.00	1.00			
44	A	310.62	530.76	6.00	7.00	0.00	0.00	1.00			
45	A	353.81	554.18	6.00	98.00	0.00	0.00	1.00			
46	A	382.95	561.05	6.00	115.00	0.00	0.00	1.00			
47	A	290.64	497.22	6.00	108.00	0.00	0.00	1.00			
48	A	355.45	589.73	6.00	195.00	0.00	0.00	1.00			
49	A	358.91	571.25	6.00	193.00	0.00	0.00	1.00			
50	A	402.33	577.70	6.00	3.00	0.00	0.00	1.00			
51	A	402.38	564.99	6.00	356.00	0.00	0.00	1.00			
52	A	406.21	548.48	6.00	2.00	0.00	0.00	1.00			
53	A	520.11	559.19	6.00	281.00	0.00	0.00	1.00			
54	A	506.61	540.79	6.00	12.00	0.00	0.00	1.00			
55	A	501.61	569.52	6.00	10.00	0.00	0.00	1.00			
56	A	512.57	590.15	6.00	192.00	0.00	0.00	1.00			
57	A	516.92	562.49	6.00	189.00	0.00	0.00	1.00			
58	A	483.62	606.24	6.00	284.00	0.00	0.00	1.00			
59	A	448.14	599.16	6.00	299.00	0.00	0.00	1.00			
60	A	435.79	536.11	6.00	103.00	0.00	0.00	1.00			
61	A	422.85	534.05	6.00	98.00	0.00	0.00	1.00			
62	A	452.33	578.75	6.00	192.00	0.00	0.00	1.00			
63	A	454.72	563.29	6.00	191.00	0.00	0.00	1.00			
64	A	458.03	543.90	6.00	190.00	0.00	0.00	1.00			
65	A	509.29	601.18	6.00	196.00	0.00	0.00	1.00			
66	A	408.13	597.81	6.00	235.00	0.00	0.00	1.00			
67	A	400.60	600.15	6.00	266.00	0.00	0.00	1.00			
68	A	447.69	526.15	6.00	22.00	0.00	0.00	1.00			
69	B	402.75	530.59	6.00	101.00	0.00	0.00	1.00			
70	C	257.22	491.63	6.00	103.00	0.00	0.00	1.00			
71	B	313.00	557.78	6.00	202.00	0.00	0.00	0.50			
72	B	410.15	606.81	6.00	301.00	0.00	0.00	0.50			

Layout Continued

ID	Type	X	Y	Height	Angle	Tilt	Cant	Out-reach	Target X	Target Y	Target Z
73	C	240.27	488.49	6.00	98.00	0.00	0.00	1.00			
74	E	338.97	616.84	8.00	11.00	0.00	0.00	0.40			
75	D	417.66	614.43	8.00	178.00	0.00	0.00	0.40			

Horizontal Illuminance (lux)

Grid 1



Results

Eav	7.76
Emin	2.04
Emax	18.96
Emin/Emax	0.11
Emin/Eav	0.26

Horizontal Illuminance (lux)

Branch Road 1

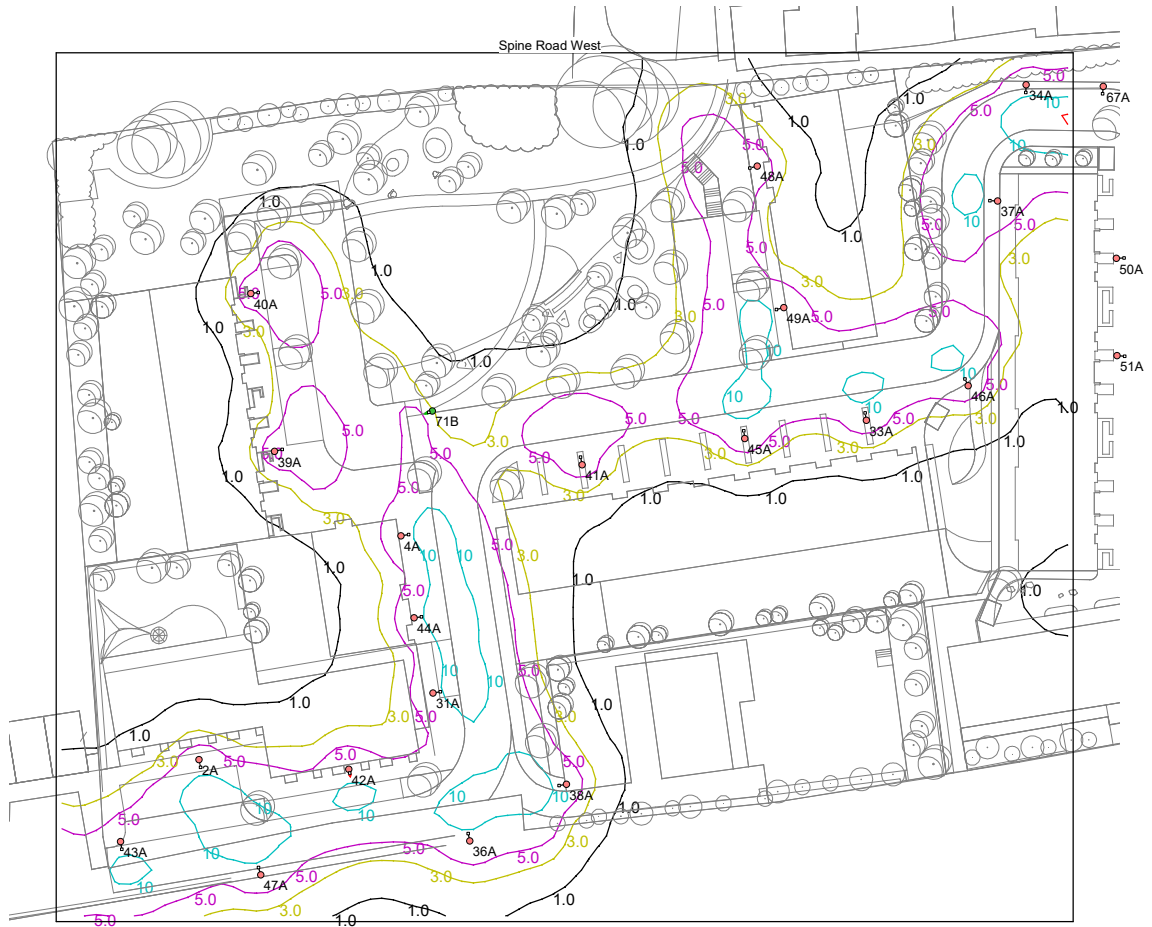


Results

Eav	5.79
Emin	1.43
Emax	13.03
Emin/Emax	0.11
Emin/Eav	0.25

Horizontal Illuminance (lux)

Spine Road West



Results

Eav	7.93
Emin	2.14
Emax	15.37
Emin/Emax	0.14
Emin/Eav	0.27

Horizontal Illuminance (lux)

Branch Road 2

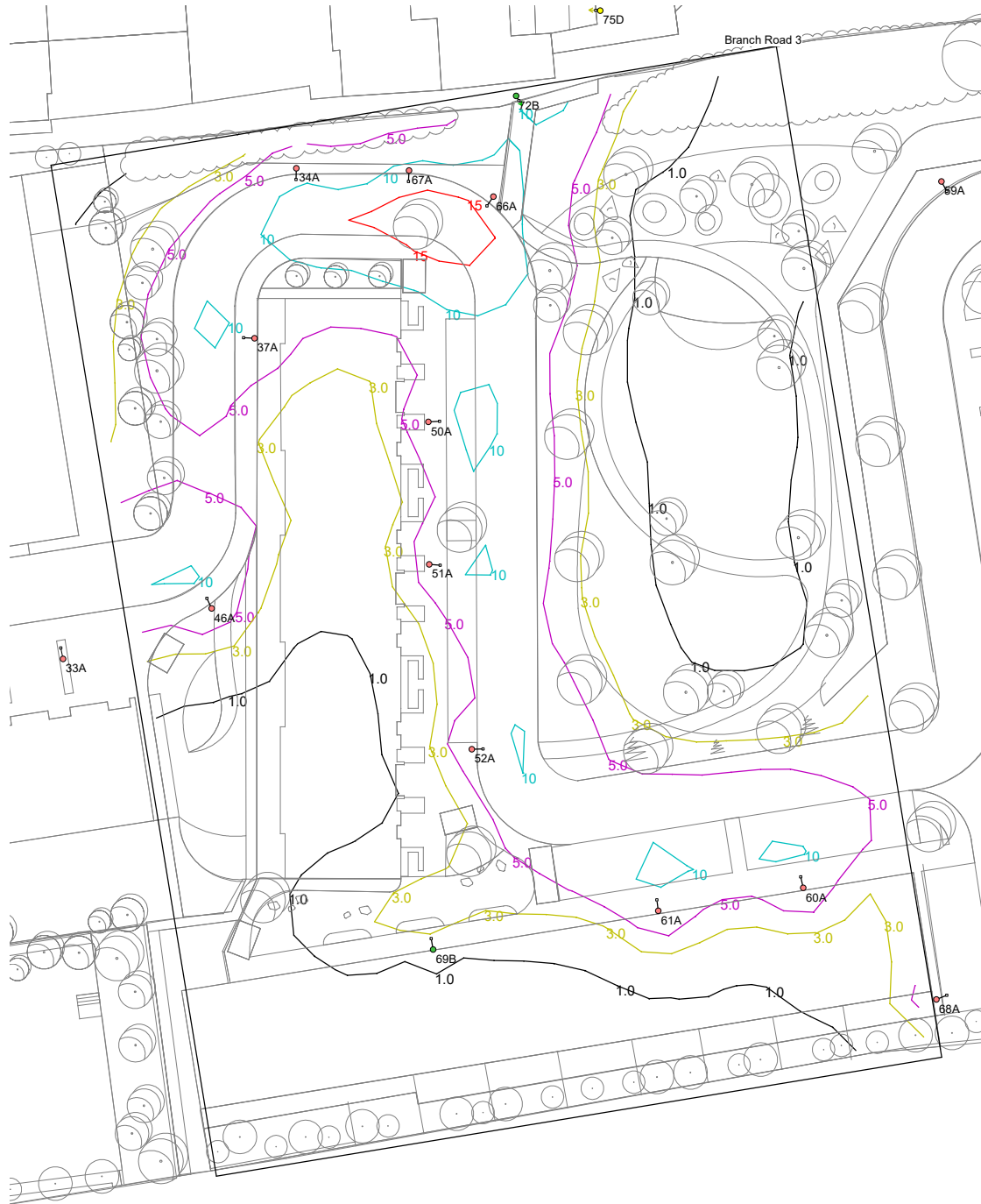


Results

Eav	5.40
Emin	1.12
Emax	11.36
Emin/Emax	0.10
Emin/Eav	0.21

Horizontal Illuminance (lux)

Branch Road 3

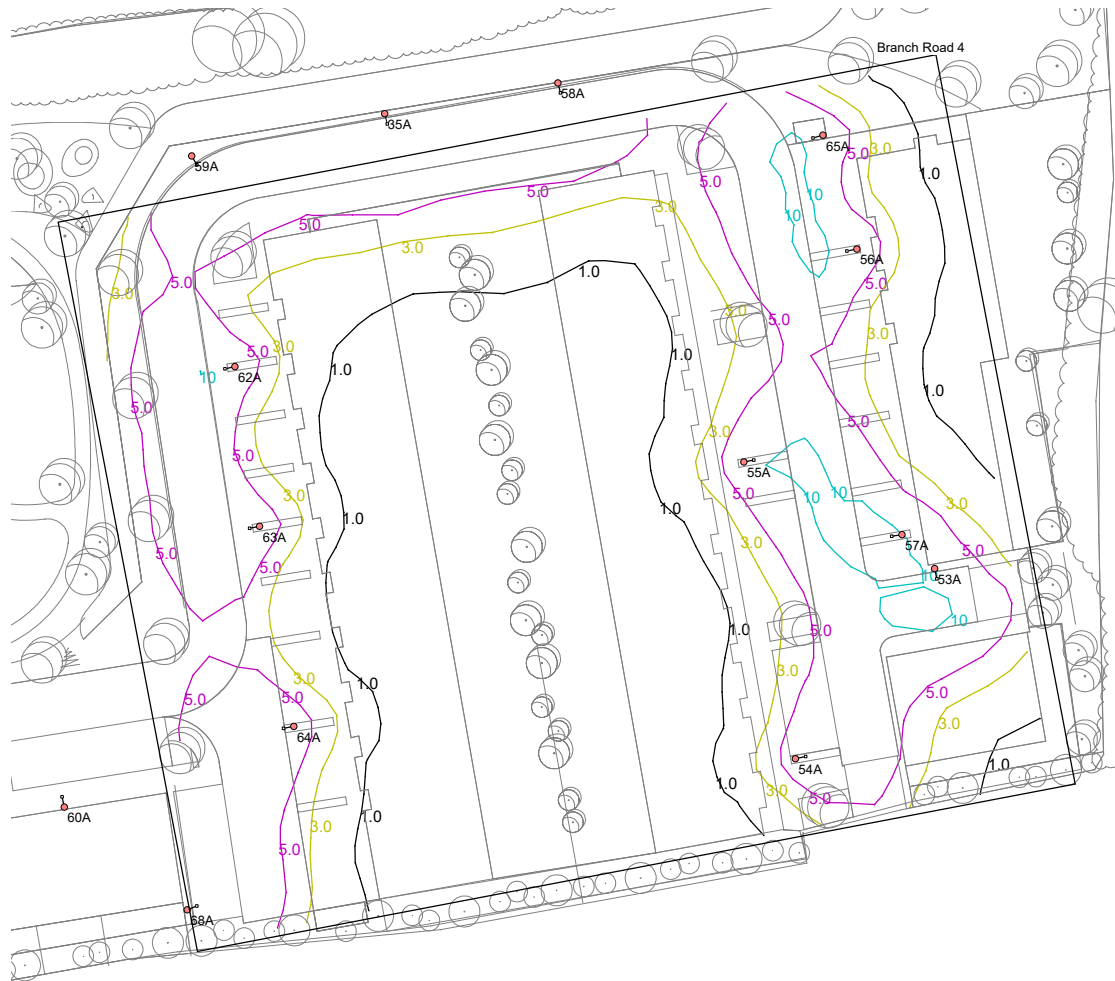


Results

Eav	6.93
Emin	1.41
Emax	16.72
Emin/Emax	0.08
Emin/Eav	0.20

Horizontal Illuminance (lux)

Branch Road 4

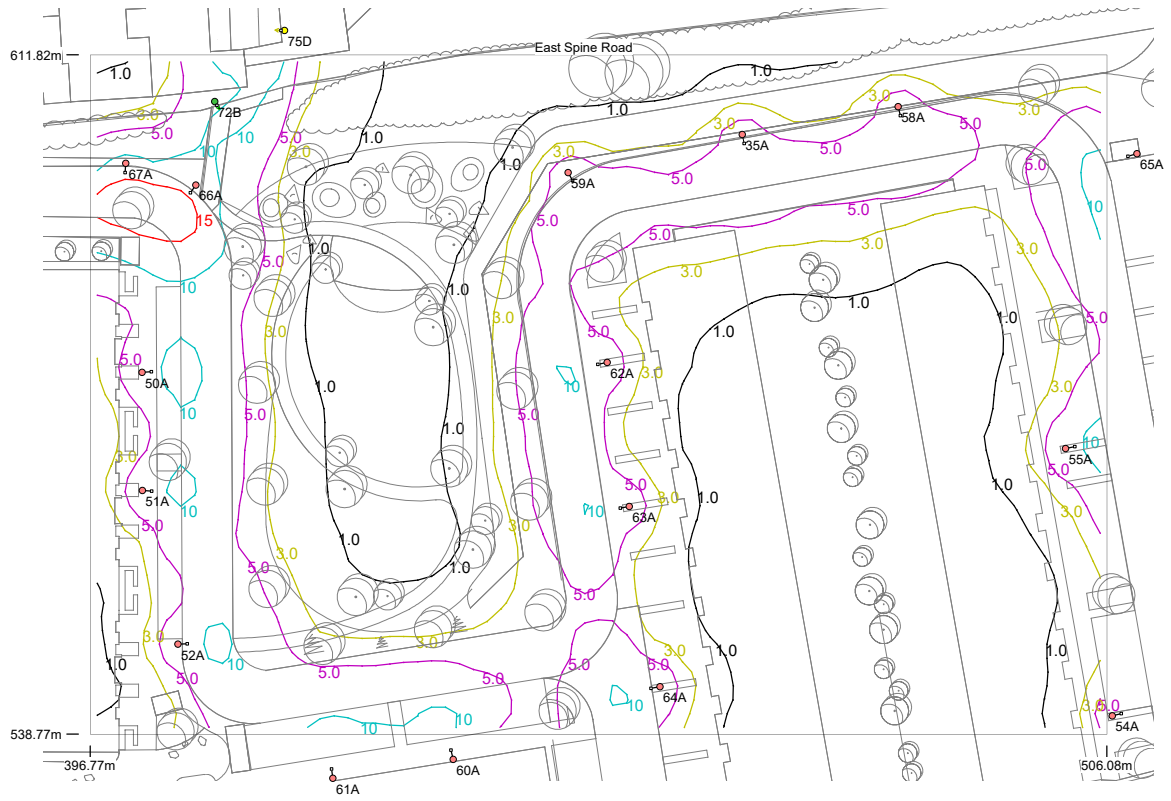


Results

Eav	5.88
Emin	1.27
Emax	12.30
Emin/Emax	0.10
Emin/Eav	0.22

Horizontal Illuminance (lux)

East Spine Road

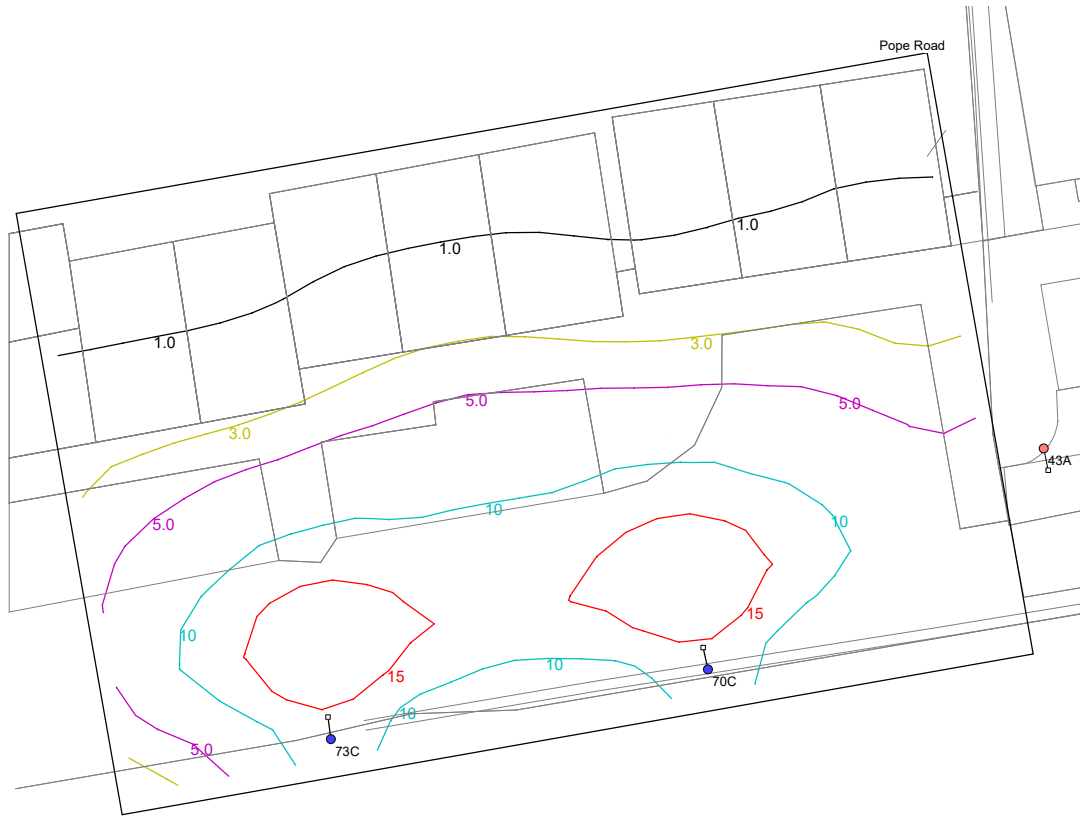


Results

Eav	7.56
Emin	2.96
Emax	18.70
Emin/Emax	0.16
Emin/Eav	0.39

Horizontal Illuminance (lux)

Pope Road

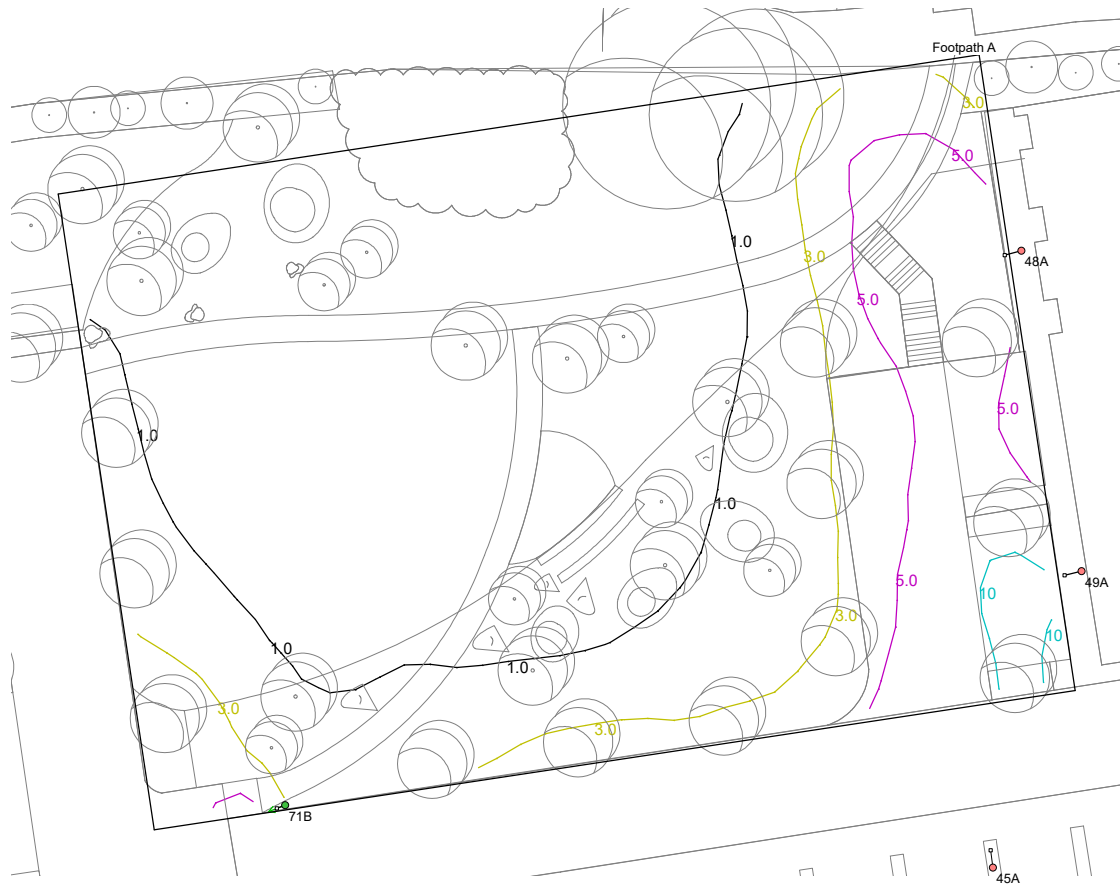


Results

Eav	8.39
Emin	1.80
E _{max}	19.32
E _{min} /E _{max}	0.09
E _{min} /E _{av}	0.21

Horizontal Illuminance (lux)

Footpath A



Results

Eav	6.37
Emin	3.06
E _{max}	11.28
E _{min} /E _{max}	0.27
E _{min} /E _{av}	0.48