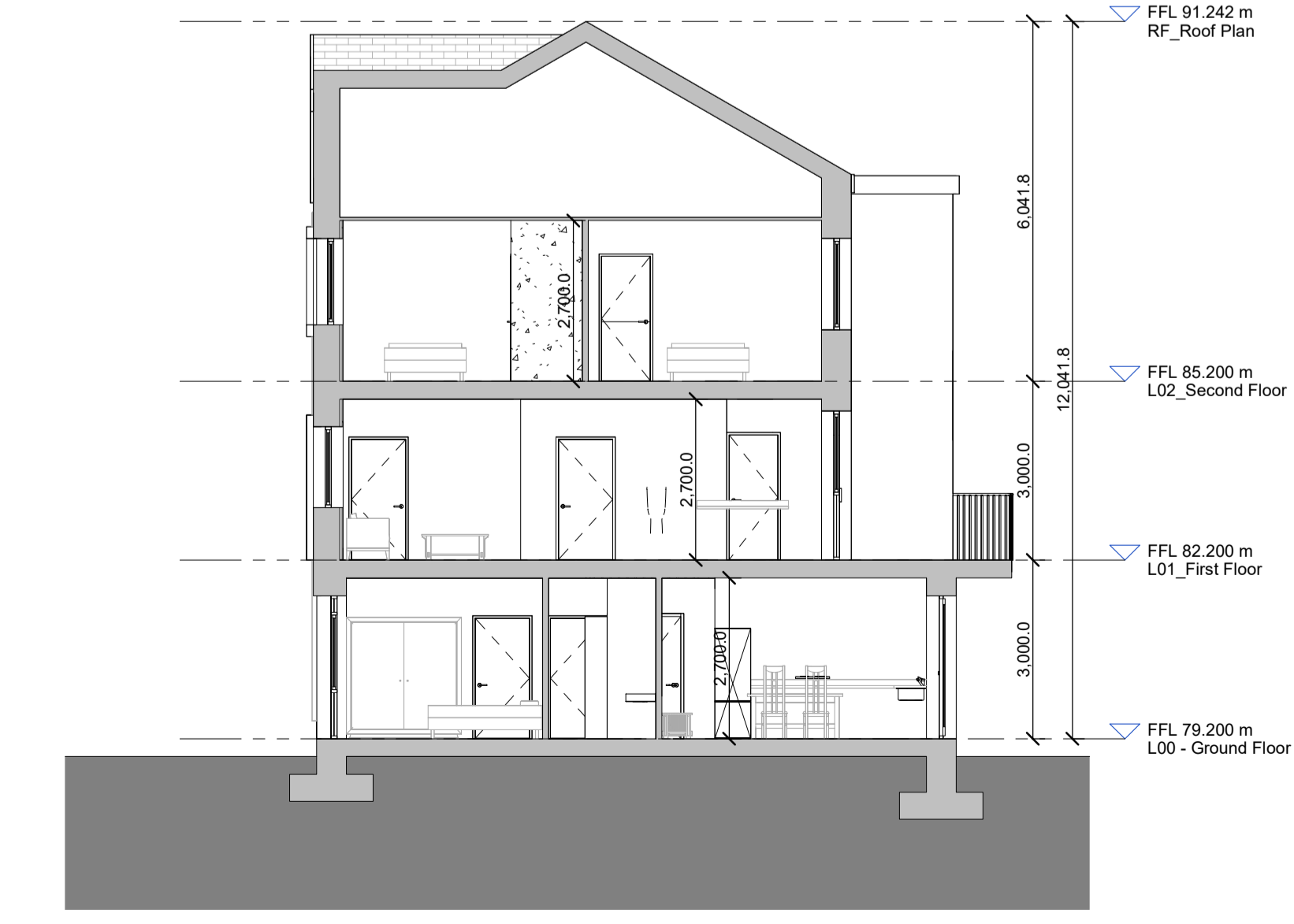
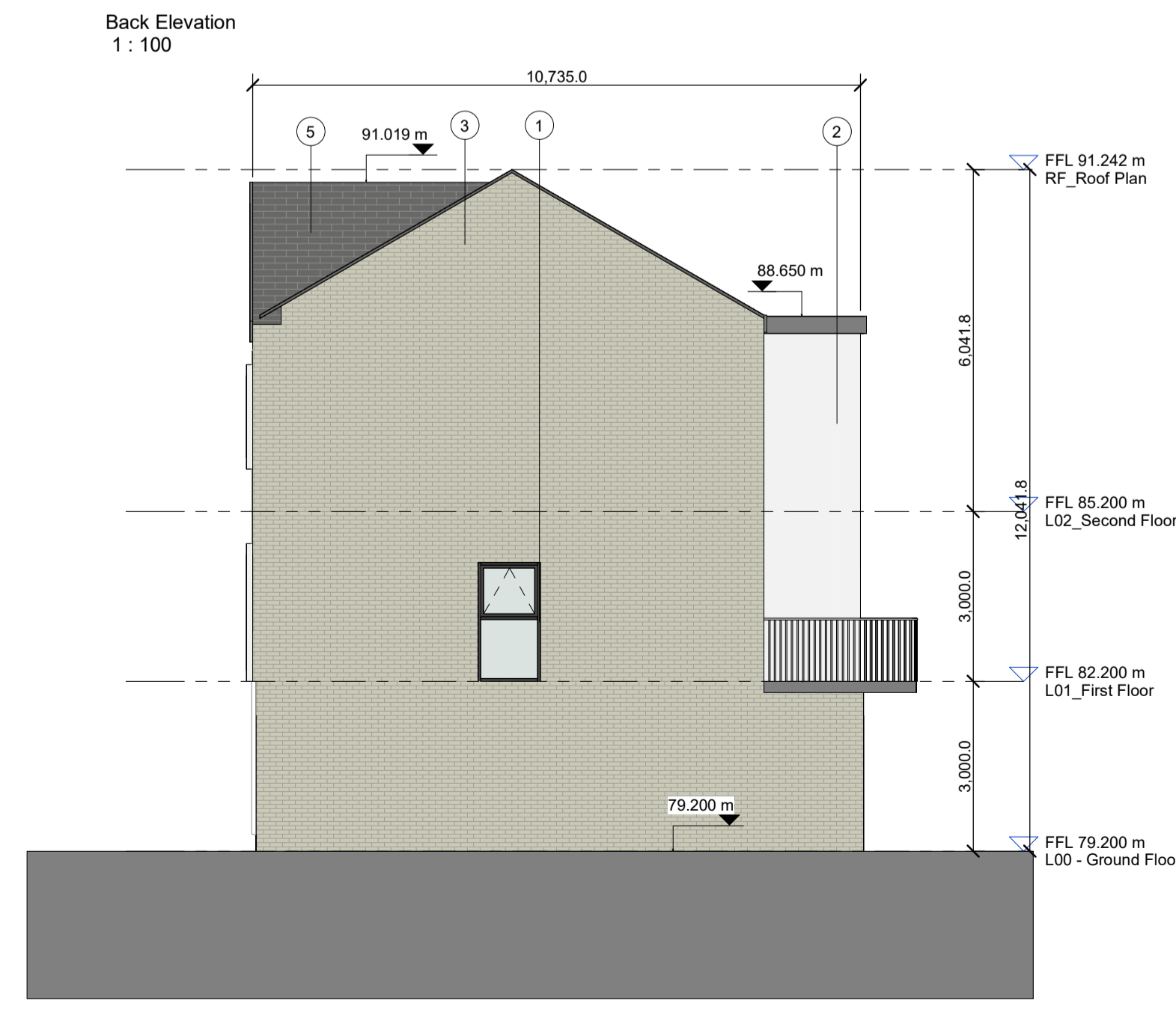
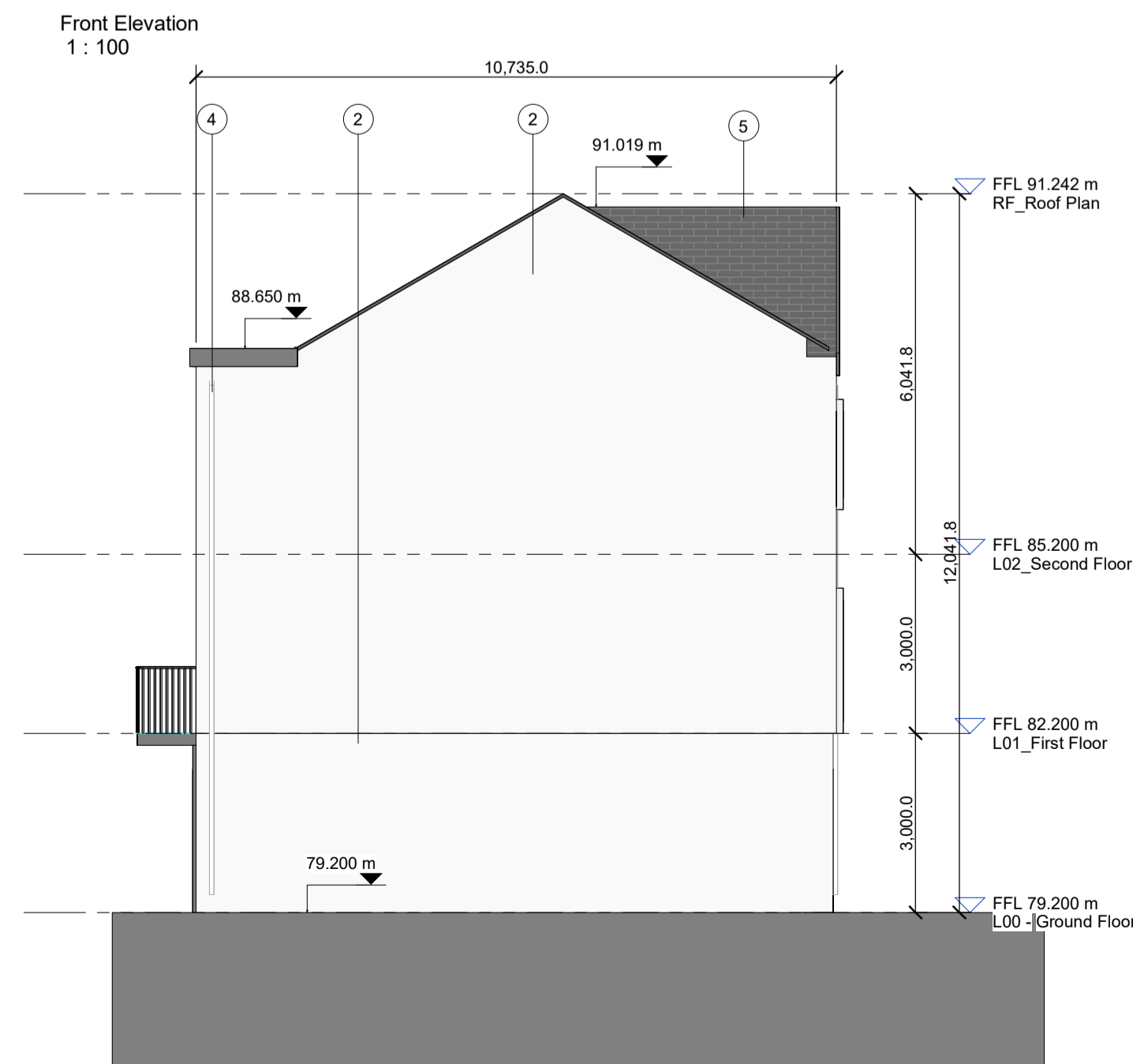
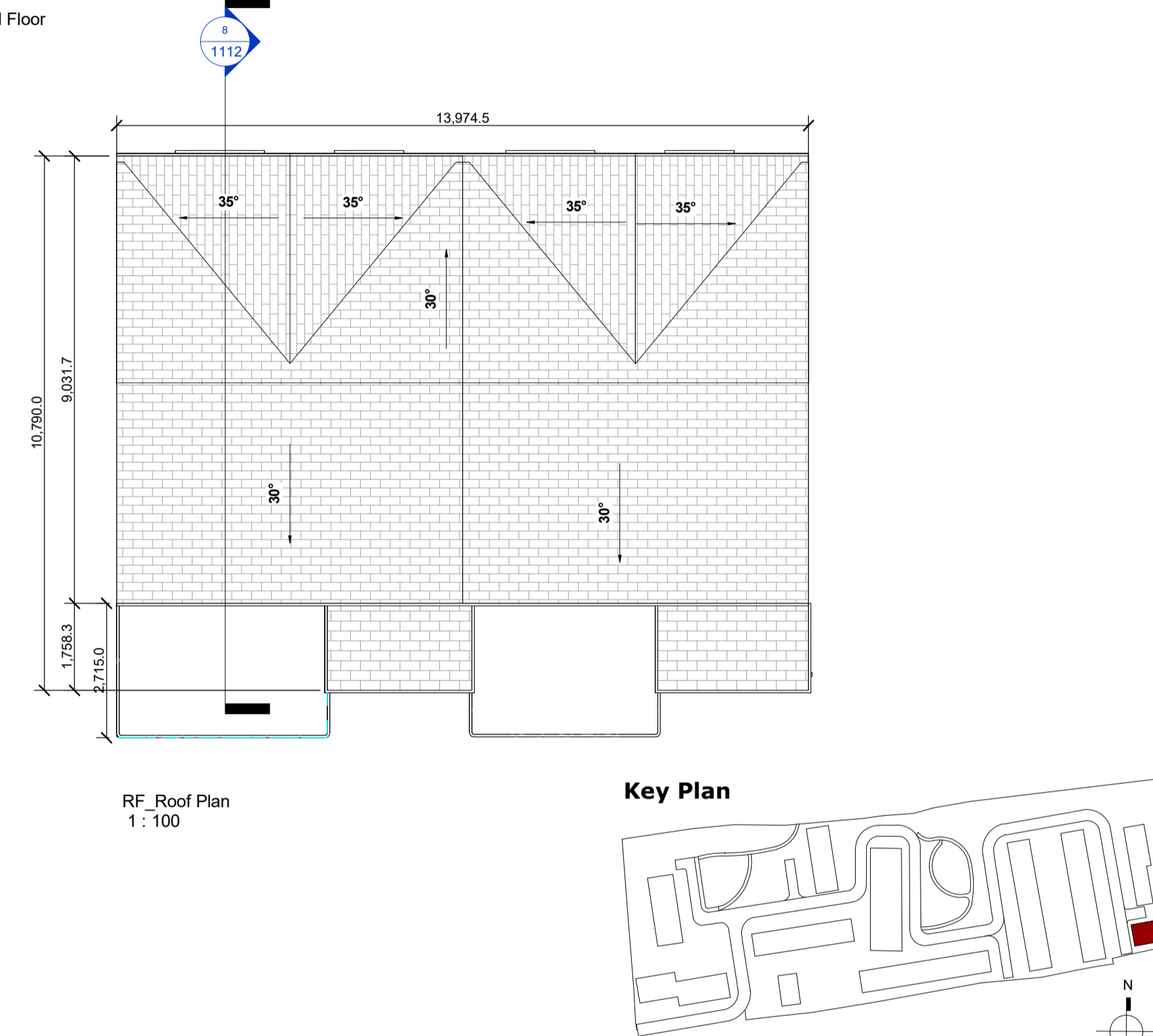
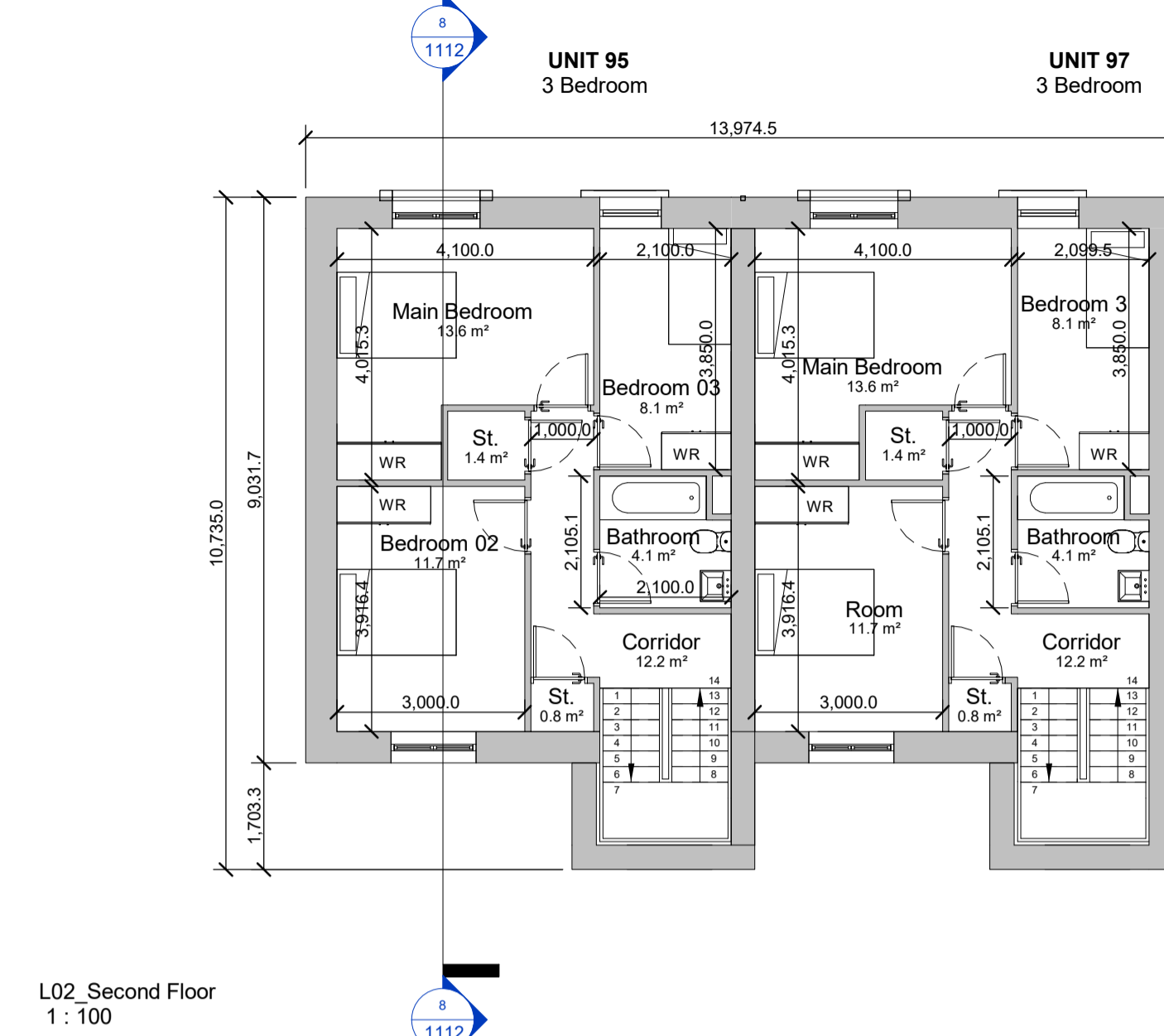
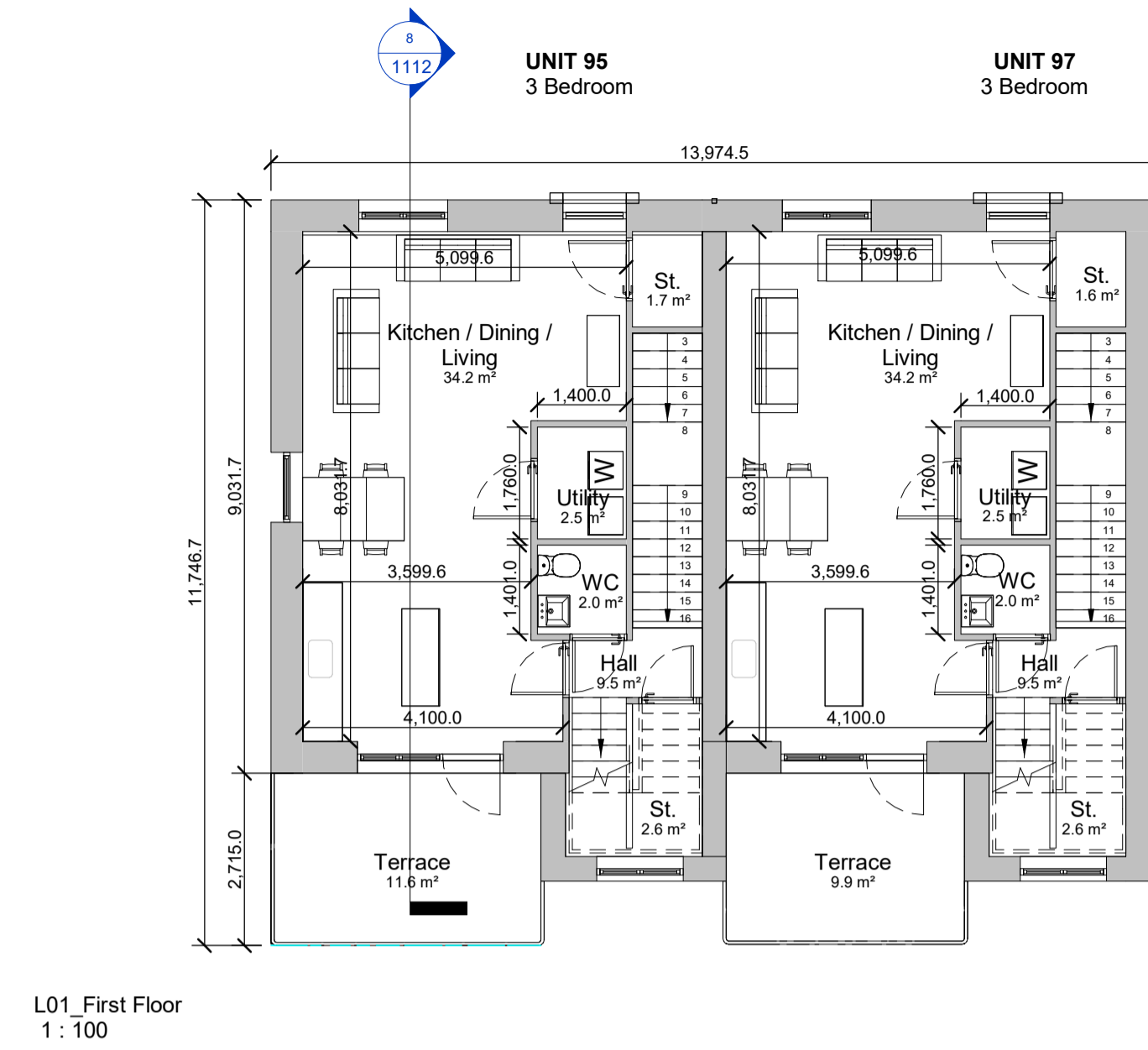
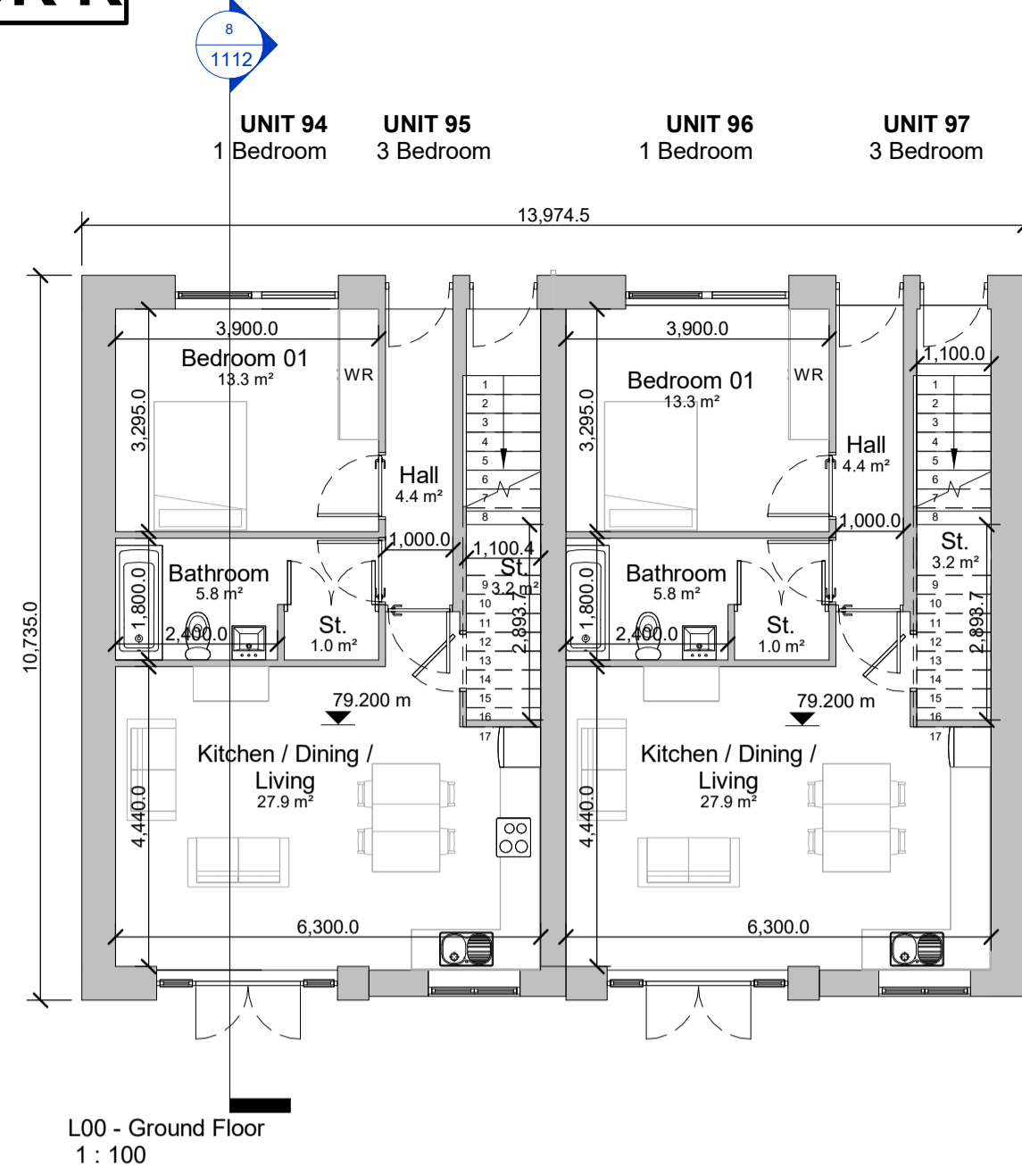


BLOCK K



Notes:
 - Do not scale from this drawing. Use figured dimensions in all cases.
 - Verify dimensions on site and report any discrepancies to the Architect immediately.
 - This drawing is to be read in conjunction with the Architect's Specification.
 - © This drawing is copyright and may only be reproduced with the Architect's permission.

Drawing Notes:
 * For individual North point locations / orientation please refer to key plan
 * For individual floor levels please refer to site layout plan

- MATERIAL LEGEND**
- Selected aluminium / PVC window & door frames
 - Selected painted smooth plaster finish color TBC
 - Selected decorative brick colour TBC
 - Selected PVC gutter / downpipe
 - Selected reconstituted fibre cement slate roof

Gross Internal Floor Area	
Level	Area
UNIT 94	
L00	57.6 m ²
	57.6 m ²
UNIT 95	
L00	3.3 m ²
L01	54.9 m ²
L02	54.9 m ²
	113.0 m ²
UNIT 96	
L00	57.6 m ²
	57.6 m ²
UNIT 97	
L00	3.3 m ²
L01	54.8 m ²
L02	54.8 m ²
	113.0 m ²
Total Internal Floor Areas	341.1 m²

Rev.	Date	Drawn	Details of Issue / Revision
P3-S-03	21.02.2026	LW	Issued for Planning
P3-S-01	08.11.2024	IT	Issued for information
P3-S-02	06.08.2025	IT	Issued for Planning

Issues & Revisions

W: www.reddyarchitecture.com
E: info@reddyarchitecture.com

Client Details:
Pontorac Ltd

Project Details:
**Proposed Residential Development
 Pope's Hill, Cork**

Drawing Title:
Block K - Floor Plans, Elevations & Section

Job No.	Sheet Size:	Scale @A1:
P23-288C		1: 100
Issue Date:	Drawn By:	Reviewed By:
21.02.2026	I.Tehowska	P. Mulligan
Status	Purpose of Issue	
P3	PLANNING PERMISSION	
Project-Originator-Zone-Level-Type-Role-Classification-Number	Revision	
P23-288C-RAU-BK-XX-DR-A-1112	P3-S-03	