

BLOCK J



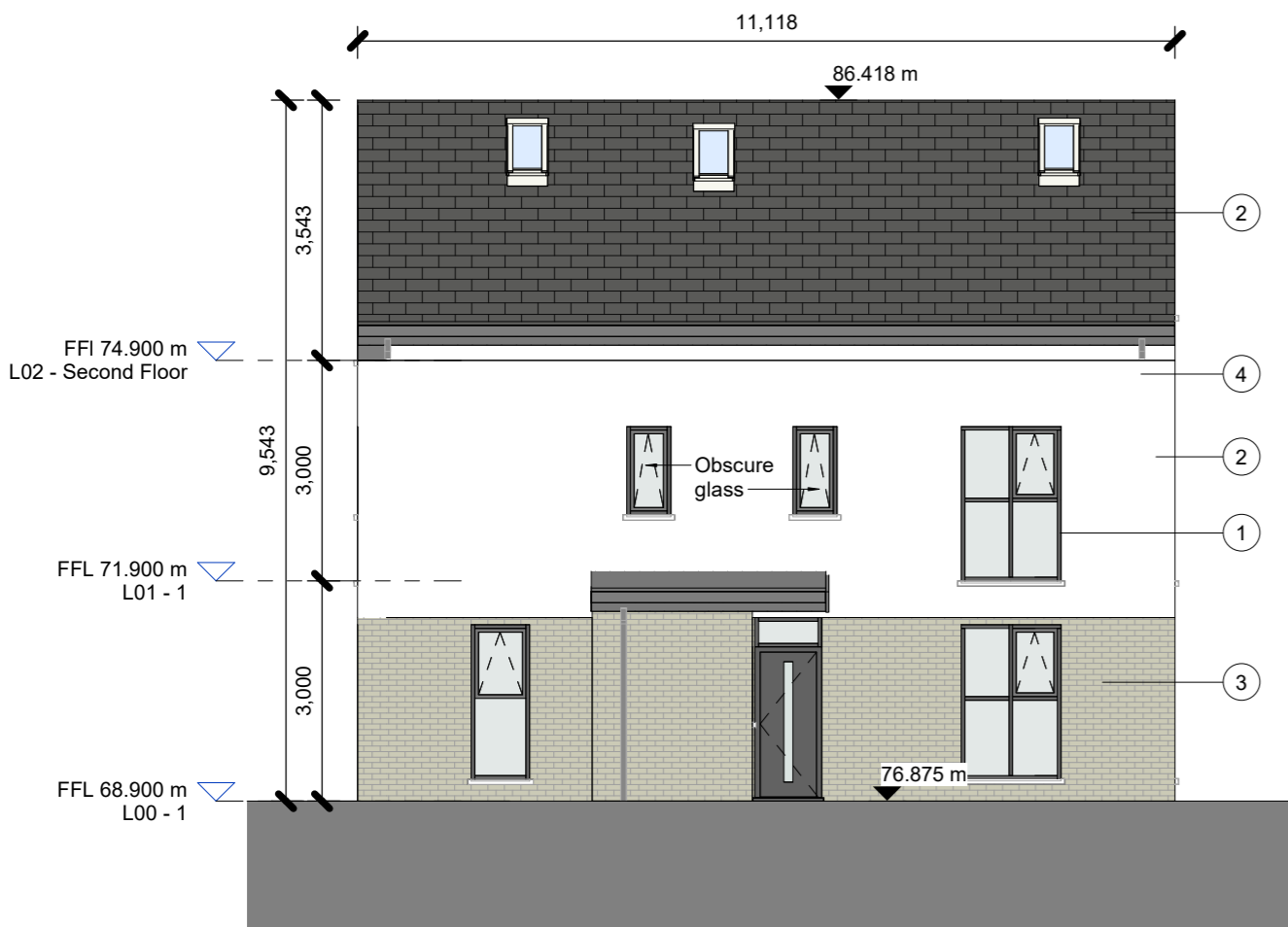
Front Elevation

1 : 100



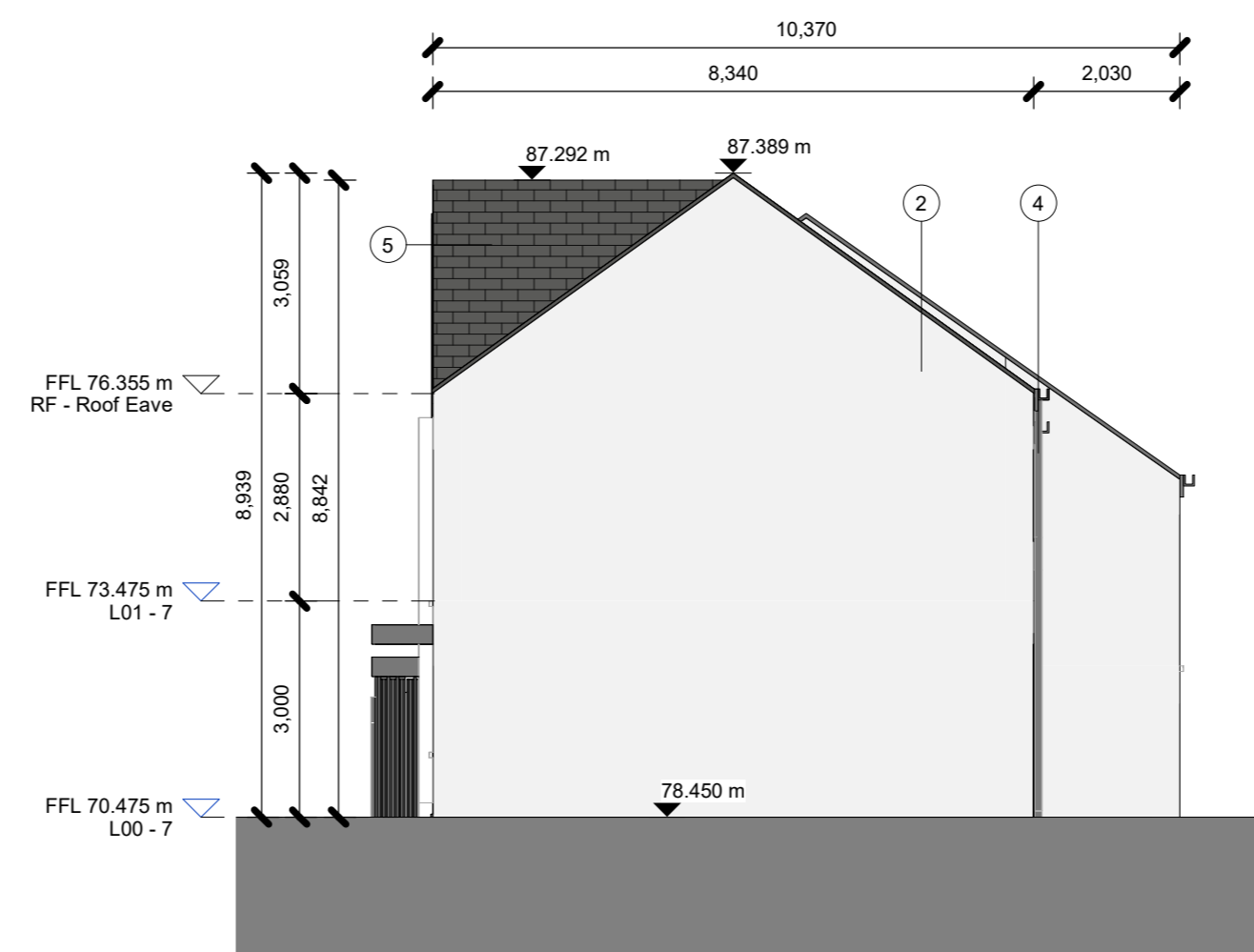
Rear Elevation

1 : 100



Side A Elevation

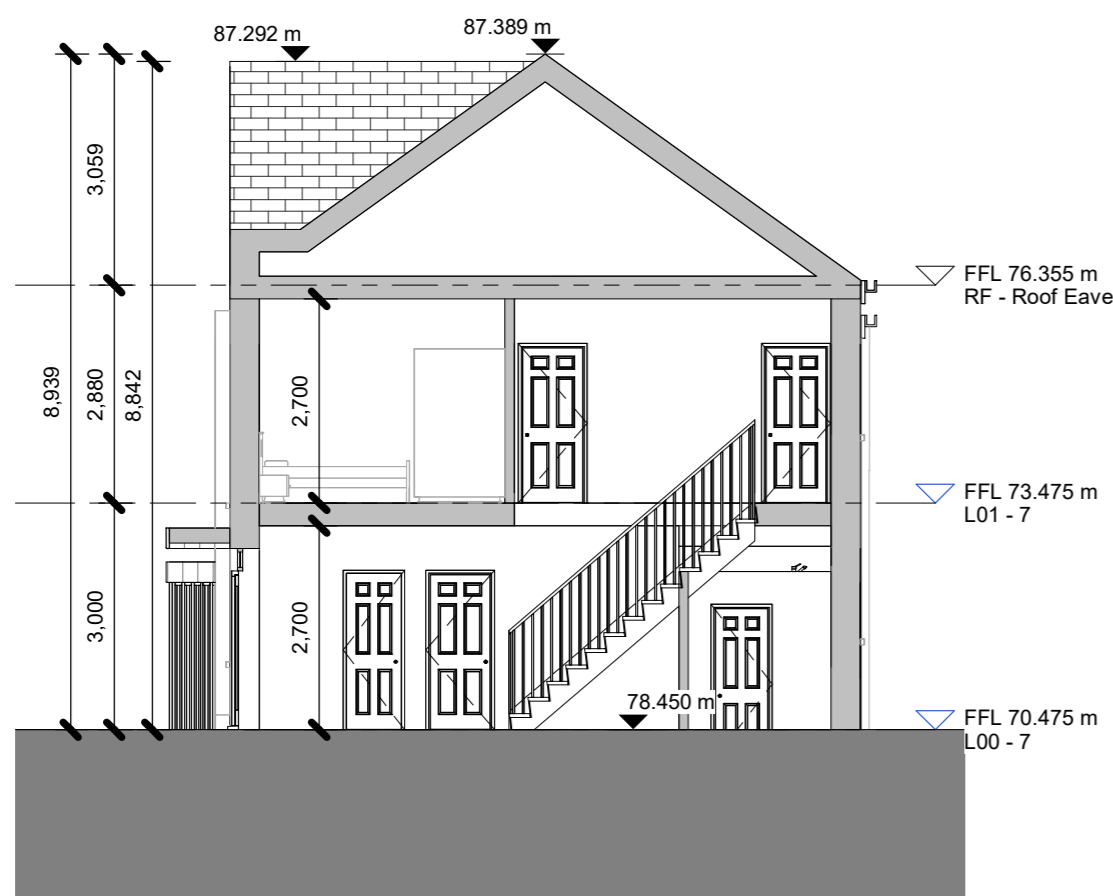
1 : 100



Side B Elevation

1 : 100

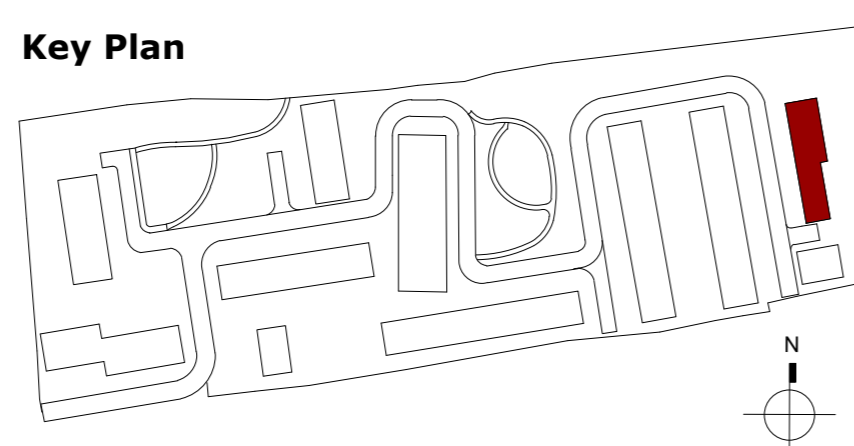
Gross Internal Floor Area	
Level	Area
UNIT 98	
L00	43.7 m ²
L01	43.7 m ²
	87.3 m²
UNIT 99	
L00	43.7 m ²
L01	43.7 m ²
	87.3 m²
UNIT 100	
L00	43.7 m ²
L01	43.7 m ²
	87.3 m²
UNIT 101	
L00	49.9 m ²
L01	48.0 m ²
	97.9 m²
UNIT 102	
L00	49.9 m ²
L01	48.0 m ²
	97.9 m²
UNIT 103	
L00	49.9 m ²
L01	48.0 m ²
	97.9 m²
UNIT 104	
L00	54.2 m ²
L01	53.0 m ²
L02	30.2 m ²
	137.3 m²
Total Internal Floor Areas 653.0 m²	



Section B-B

1 : 100

Key Plan



Issues & Revisions		
Rev.	Date	Details of Issue / Revision
P3-S-01	08.11.24	IT Issued for information
P3-S-02	06.08.2025	IT Issued for Planning Permission
P3-S-03	21.02.2026	LW Issued for Planning

reddyQ+U
 Douglas Business Centre,
 Carrigaline Rd,
 Douglas, Cork,
 T12 P038
 W: www.reddyarchitecture.com
 E: info@reddyarchitecture.com

Client Details:
Pontorac Ltd.

Project Details:
**Proposed Residential Development
 At Pope's Hill, Cork**

Drawing Title:
Block J - Elevations & Section

Job No.	Sheet Size:	Scale @A1:	Status	Purpose of Issue
P23-288C		1 : 100	P3	Planning Permission
Issue Date:	Drawn By:	Reviewed By:	Project - Originator - System - Location_Level - Type - Role - Number	Revision
21.02.2026	PM	PM	P23-288C-RAU-BJ-XX-DR-A-2108	P3-S-03