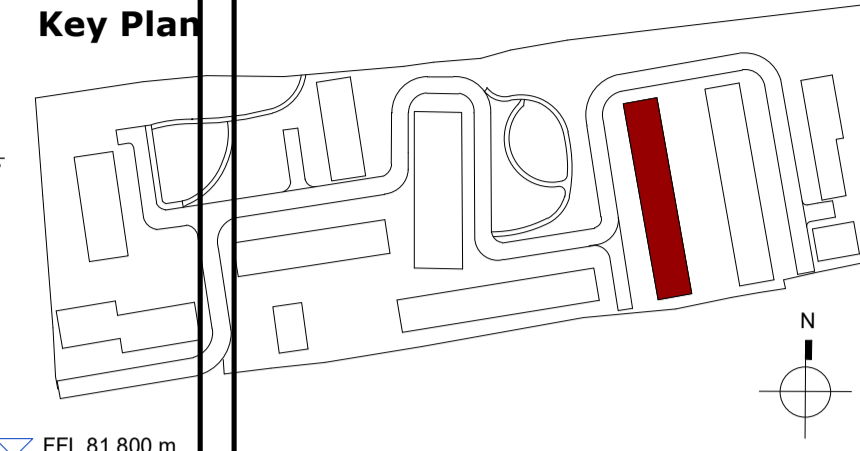


BLOCK H

Notes:
 - Do not scale from this drawing. Use figured dimensions in all cases.
 - Verify dimensions on site and report any discrepancies to the Architect immediately.
 - This drawing is to be read in conjunction with the Architect's Specification.
 - © This drawing is copyright and may only be reproduced with the Architect's permission.

Drawing Notes:



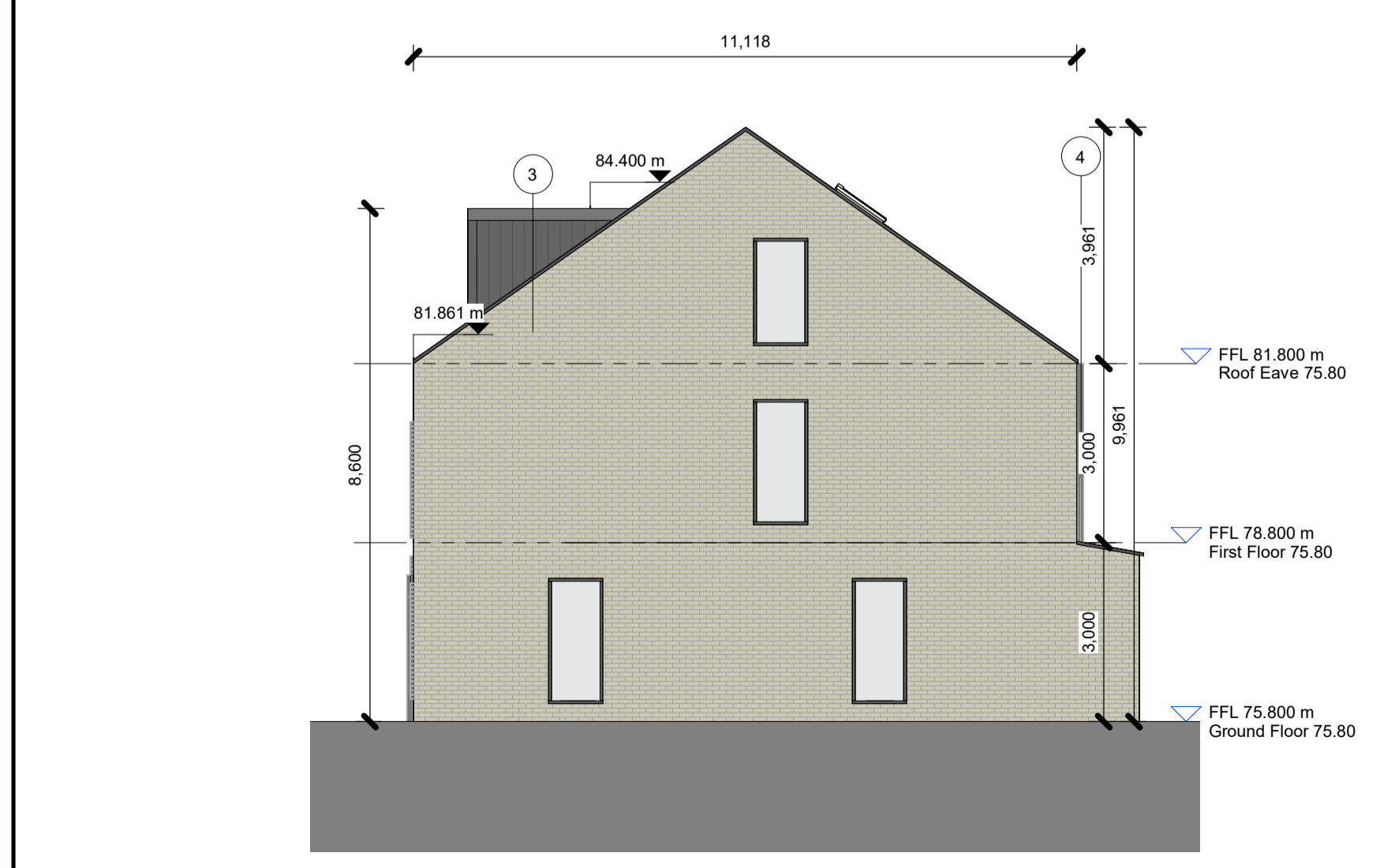
Front Elevation

1 : 100



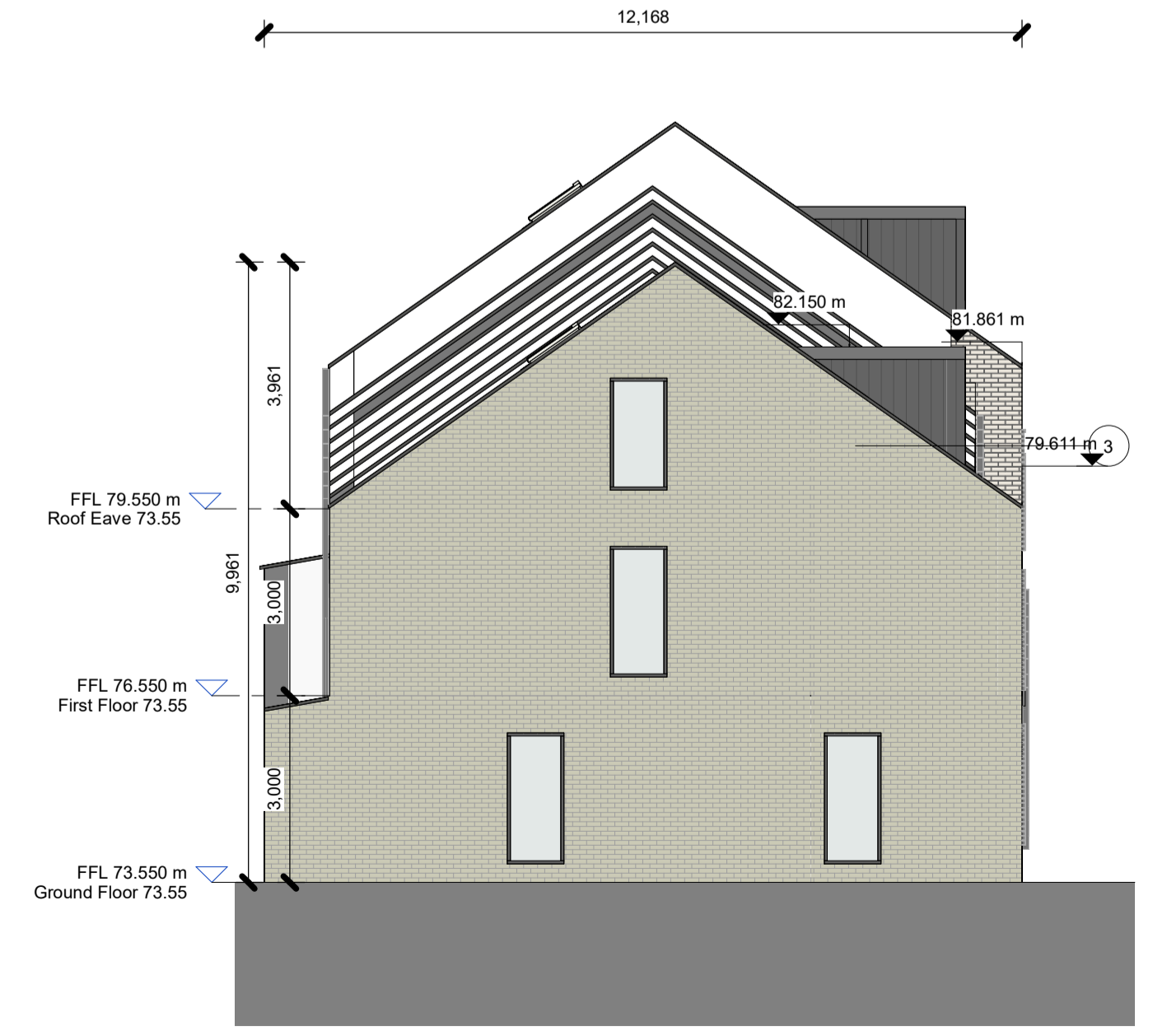
Rear Elevation

1 : 100



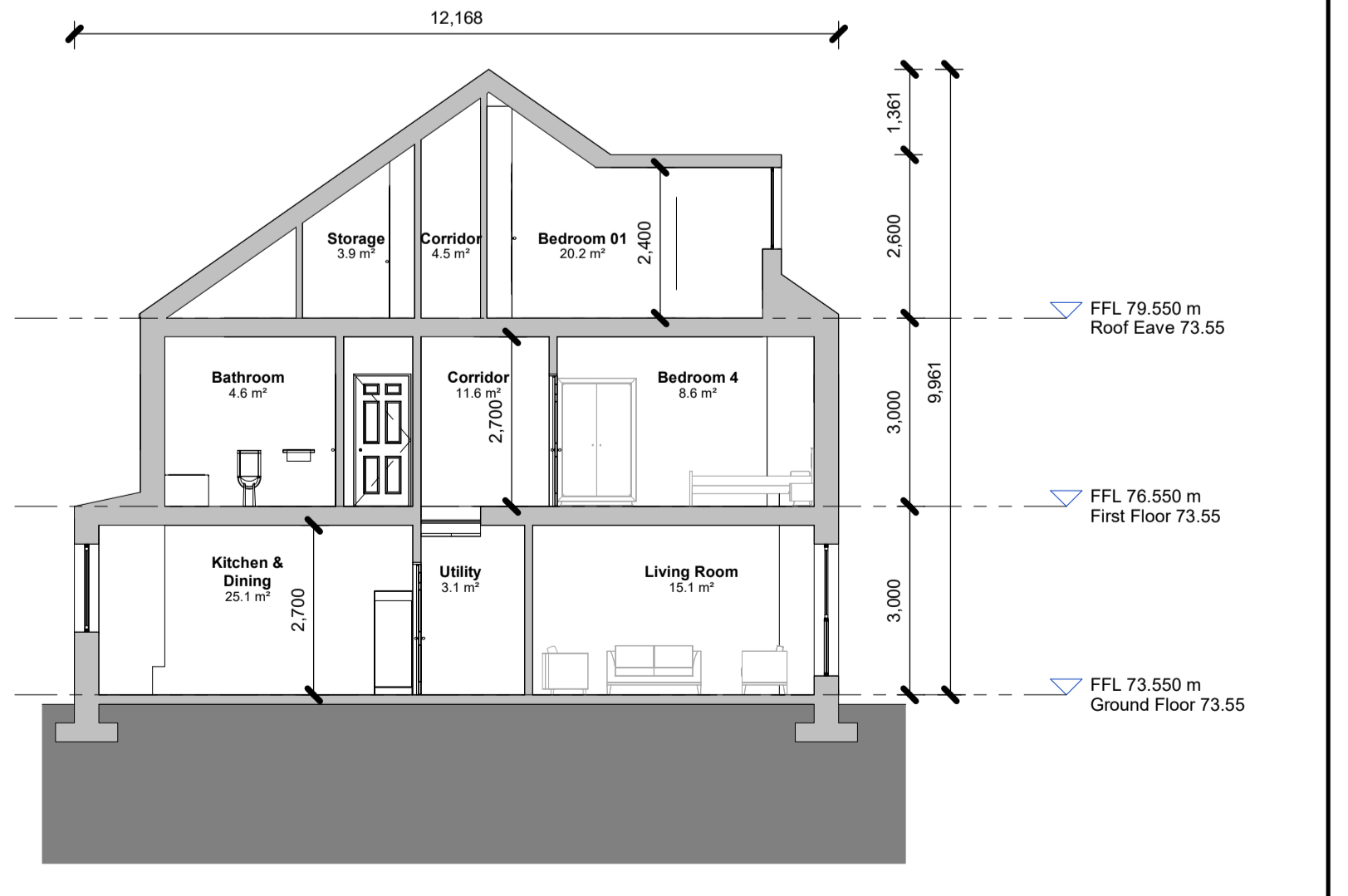
Side Elevation 1

1 : 100



Side Elevation 2

1 : 100



Section

1 : 100

- Material Legend**
- 1 Selected aluminium / PVC window & door frames
 - 2 Selected painted smooth plaster finish color TBC
 - 3 Selected decorative brick colour TBC
 - 4 Selected PVC gutter / downpipe
 - 5 Selected reconstituted fibre cement slate roof

Rev.	Date	Drawn	Details of Issue / Revision
P3-S-03	21.02.2026	LW	Issued for Planning
P3-S-02	08.02.2025	IT	Issued for Planning Permission
P3-S-01	08.11.24	IT	Issued for Information

Issues & Revisions

W: www.reddyarchitecture.com
 E: info@reddyarchitecture.com

Client Details:
 Pontorac Ltd

Project Details:
 Proposed Residential Development at Pope's Hill, Cork

Drawing Title:
 Block H - Elevations and Section

Job No. P23-288C	Sheet Size:	Scale @A1: 1 : 100
Issue Date: 21.02.2026	Drawn By: I.Tetnowska	Reviewed By: P. Mulligan
Status: P3	Purpose of Issue: Planning Permission	
Project-Originator-Zone-Level-Type-Role-Classification-Number: P23-288C-RAU-BH-XX-DR-A-2106		Revision: P3-S-03