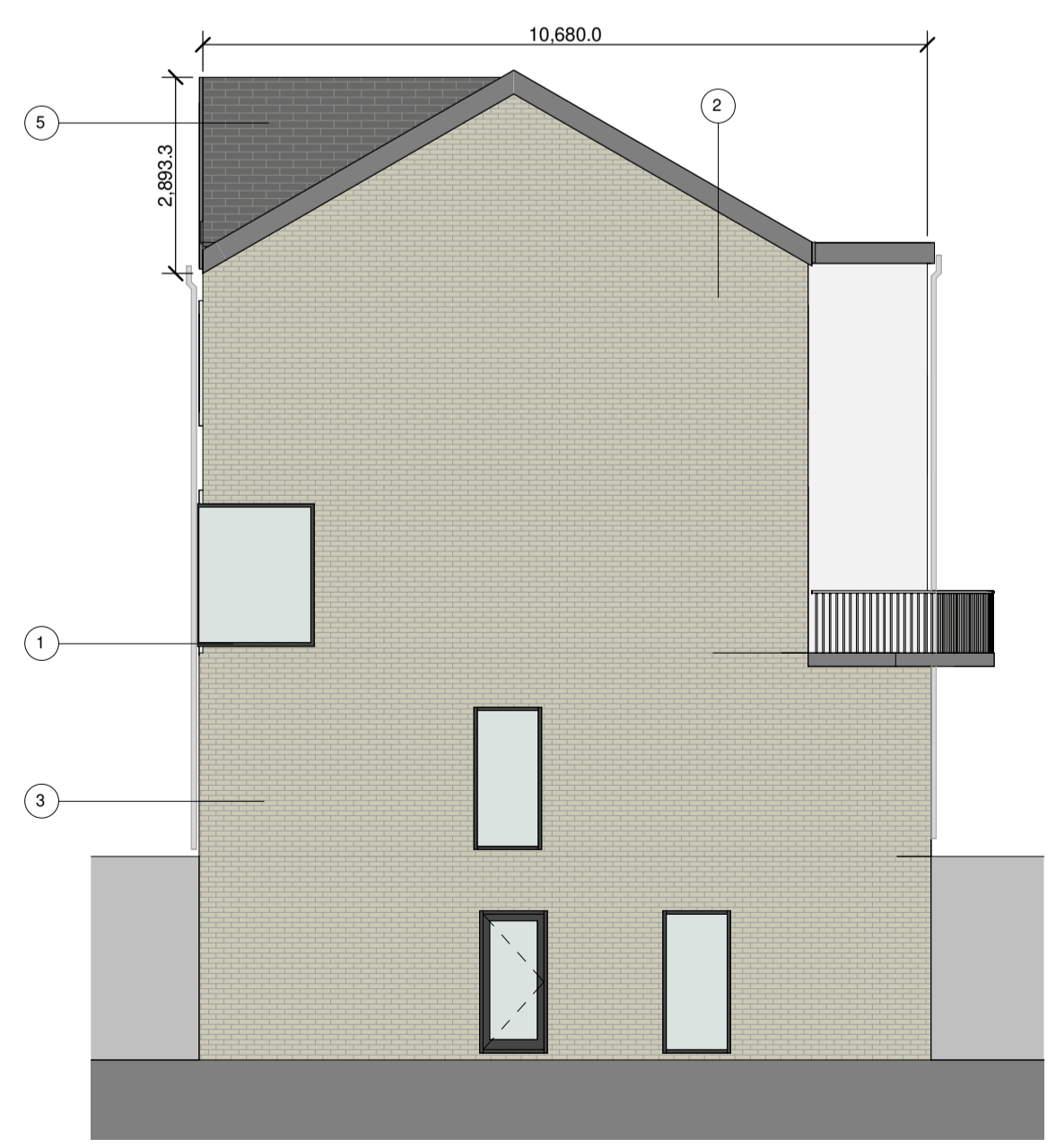




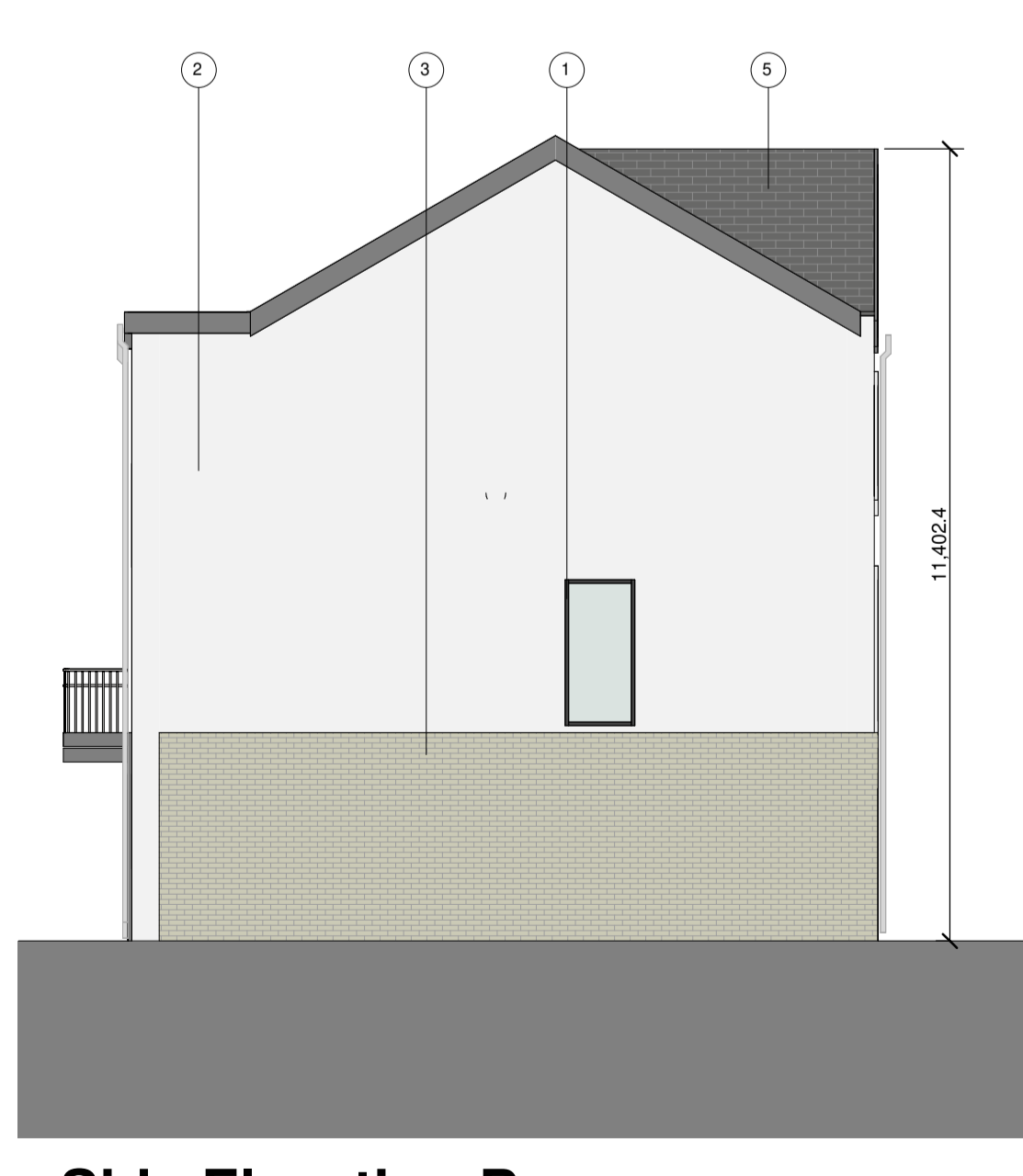
Front Elevation
1 : 100



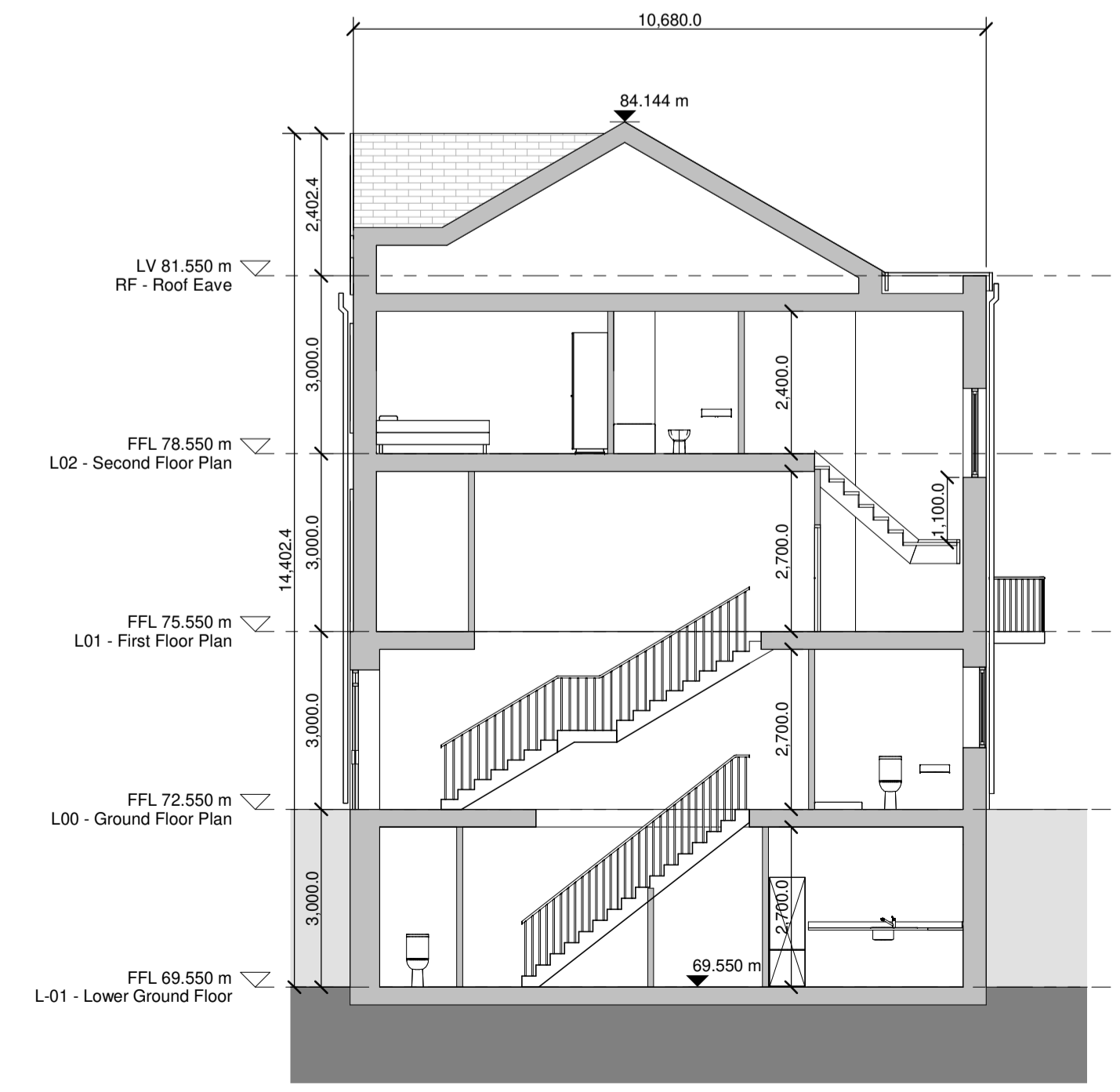
Rear Elevation
1 : 100



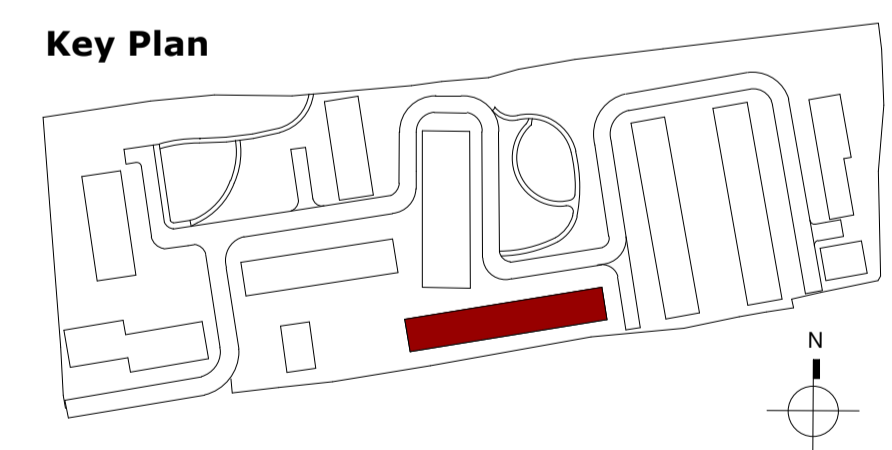
Side Elevation A
1 : 100



Side Elevation B
1 : 100



Section A-A
1 : 100



Notes:

- Do not scale from this drawing. Use figured dimensions in all cases.
- Verify dimensions on site and report any discrepancies to the Architect immediately.
- This drawing to be read in conjunction with the Architect's Specification.
- © This drawing is copyright and may only be reproduced with the Architect's permission.

Drawing Notes:

FFL 78.550 m
L02 - Second Floor Plan

FFL 75.550 m
L01 - First Floor Plan

FFL 72.550 m
L00 - Ground Floor Plan

FFL 69.550 m
L-01 - Lower Ground Floor

- Material Legend1**
- 1 Selected aluminium / PVC window & door frames
 - 2 Selected painted smooth plaster finish color TBC
 - 3 Selected decorative brick colour TBC
 - 4 Selected PVC gutter / downpipe
 - 5 Selected reconstituted fibre cement slate roof

Rev.	Date	Drawn	Details of Issue / Revision
P3-S-03	21.02.2026	IT	Issued for Planning
P3-S-02	2024.11.08	IT	Issued for Information
P3-S-01	2025.08.06	IT	Issued for Planning Permission



Client Details:
Pontrac Ltd

Project Details:
Proposed Residential Development at Pope's Hill, Cork

Drawing Title:
Block G - Elevations & Section

Job No.	Sheet Size	Scale @A1:
P23-288C	A1_L	1 : 100
Issue Date:	Drawn By:	Reviewed By:
21.02.2026	I.Tetnowska	P.Mulligan
Status	Purpose of Issue	Revision
P3	PLANNING PERMISSION	
Project - System - Spatial Zone - Level - Type - Originator - Role - Number		Revision
P23-288C-RAU-BG-XX-DR-A-2105		P3-S-03