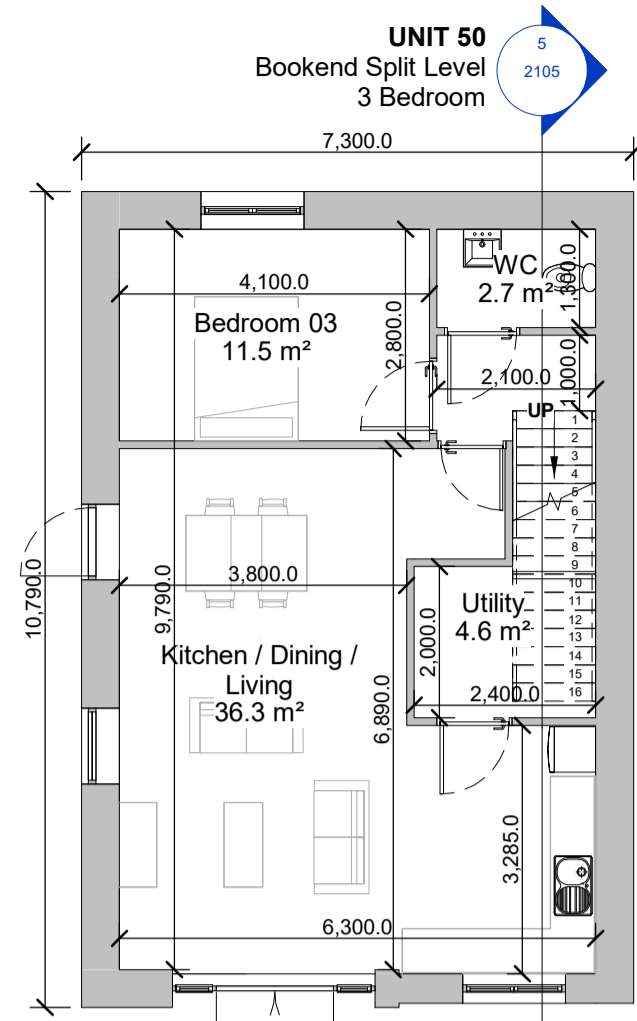
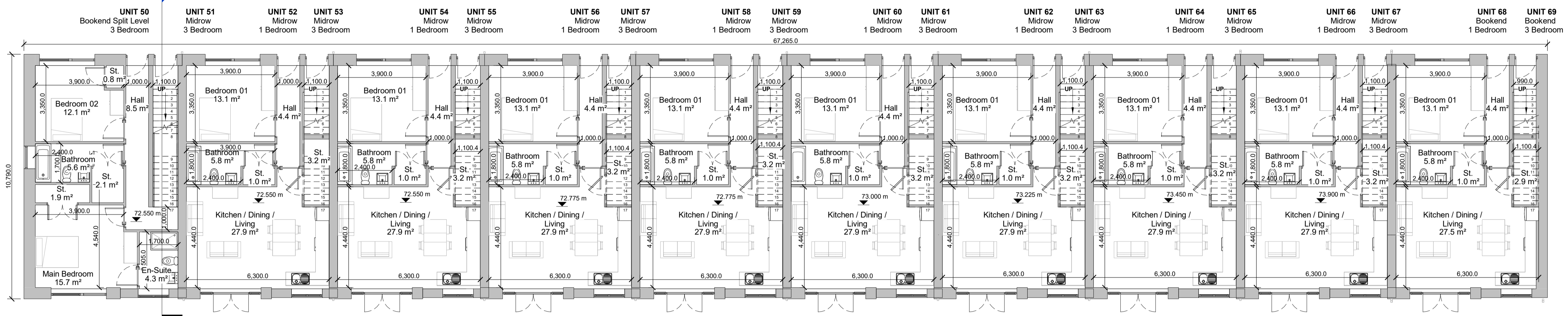


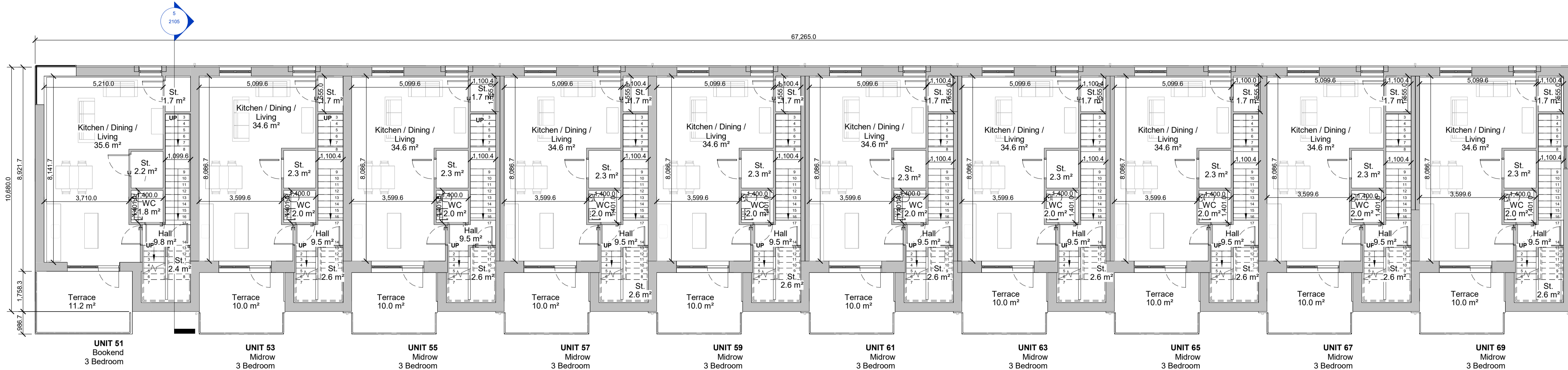
# BLOCK G



**L-01 - Lower Ground Floor**  
1 : 100

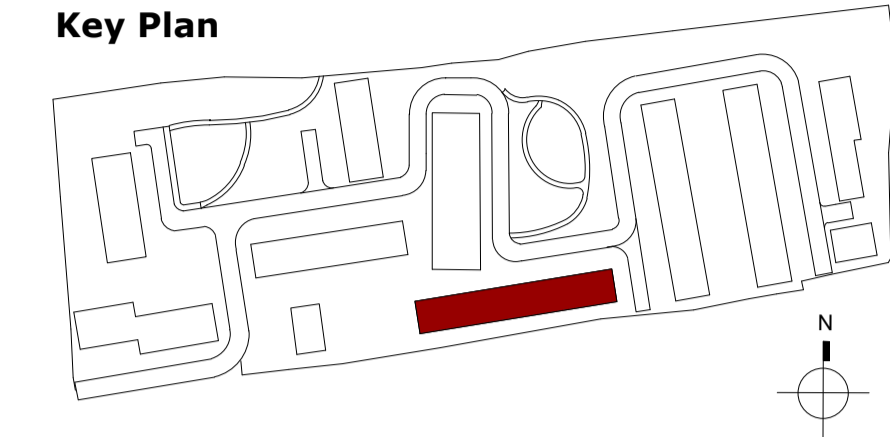


**L00 - Ground Floor Plan**  
1 : 100



**L01 - First Floor Plan**  
1 : 100

**Key Plan**



**Notes:**  
 - Do not scale from this drawing. Use figured dimensions in all cases.  
 - Verify dimensions on site and report any discrepancies to the Architect immediately.  
 - This drawing is to be read in conjunction with the Architect's Specification.  
 - © This drawing is copyright and may only be reproduced with the Architect's permission.

**Drawing Notes:**

**Gross Internal Floor Area**

Level	Area
Unit 50	
L-01	61.5 m <sup>2</sup>
L00	57.5 m <sup>2</sup>
	<b>118.9 m<sup>2</sup></b>
Unit 51	
L01	3.4 m <sup>2</sup>
L02	56.0 m <sup>2</sup>
	<b>113.3 m<sup>2</sup></b>
Unit 52	
L00	57.5 m <sup>2</sup>
Unit 53	
L00	3.4 m <sup>2</sup>
L01	54.9 m <sup>2</sup>
L02	54.9 m <sup>2</sup>
	<b>113.1 m<sup>2</sup></b>
Unit 54	
L00	57.5 m <sup>2</sup>
	<b>57.5 m<sup>2</sup></b>
Unit 55	
L00	3.4 m <sup>2</sup>
L01	54.9 m <sup>2</sup>
L02	54.9 m <sup>2</sup>
	<b>113.1 m<sup>2</sup></b>
Unit 56	
L00	57.5 m <sup>2</sup>
	<b>57.5 m<sup>2</sup></b>
Unit 57	
L00	3.4 m <sup>2</sup>
L01	54.9 m <sup>2</sup>
L02	54.9 m <sup>2</sup>
	<b>113.1 m<sup>2</sup></b>
Unit 58	
L00	57.5 m <sup>2</sup>
	<b>57.5 m<sup>2</sup></b>
Unit 59	
L01	3.4 m <sup>2</sup>
L02	54.9 m <sup>2</sup>
	<b>54.9 m<sup>2</sup></b>
Unit 60	
L00	57.5 m <sup>2</sup>
	<b>57.5 m<sup>2</sup></b>
Unit 61	
L01	3.4 m <sup>2</sup>
L02	54.9 m <sup>2</sup>
	<b>54.9 m<sup>2</sup></b>
Unit 62	
L00	57.5 m <sup>2</sup>
	<b>57.5 m<sup>2</sup></b>
Unit 63	
L00	3.4 m <sup>2</sup>
L01	54.9 m <sup>2</sup>
L02	54.9 m <sup>2</sup>
	<b>113.1 m<sup>2</sup></b>
Unit 64	
L00	57.5 m <sup>2</sup>
	<b>57.5 m<sup>2</sup></b>
Unit 65	
L00	3.4 m <sup>2</sup>
L01	54.9 m <sup>2</sup>
L02	54.9 m <sup>2</sup>
	<b>113.1 m<sup>2</sup></b>
Unit 66	
L00	57.5 m <sup>2</sup>
	<b>57.5 m<sup>2</sup></b>
Unit 67	
L00	3.4 m <sup>2</sup>
L01	54.9 m <sup>2</sup>
L02	54.9 m <sup>2</sup>
	<b>113.1 m<sup>2</sup></b>
Unit 68	
L00	57.5 m <sup>2</sup>
	<b>57.5 m<sup>2</sup></b>
Unit 69	
L01	3.4 m <sup>2</sup>
L02	54.9 m <sup>2</sup>
	<b>54.9 m<sup>2</sup></b>
<b>Total Internal Floor Areas</b>	<b>1,768.9 m<sup>2</sup></b>

Rev.	Date	Drawn	Details of Issue / Revision
P3-S-3	21.02.2026	LW	Issued for Planning
P3-S-2	2024.11.08	IT	Issued for Information
P3-S-1	2025.08.06	IT	Issued for Planning Permission

Issues & Revisions	



**Pontorac Ltd**

**Proposed Residential Development at Pope's Hill, Cork**

**Block G - Floor Plans (Sheet 1 of 2)**

Job No. <b>P23-288C</b>	Sheet Size: <b>A1_L</b>	Scale @A1: <b>1 : 100</b>
Issue Date: <b>21.02.2026</b>	Drawn By: <b>SD</b>	Reviewed By: <b>PM</b>

Status: <b>P3</b>	Purpose of Issue: <b>PLANNING PERMISSION</b>
Project - System - Spatial Zone - Level - Type - Originator - Role - Number: <b>P23-288C-RAU-BG-XX-DR-A-1107</b>	Revision: <b>P3-S-3</b>