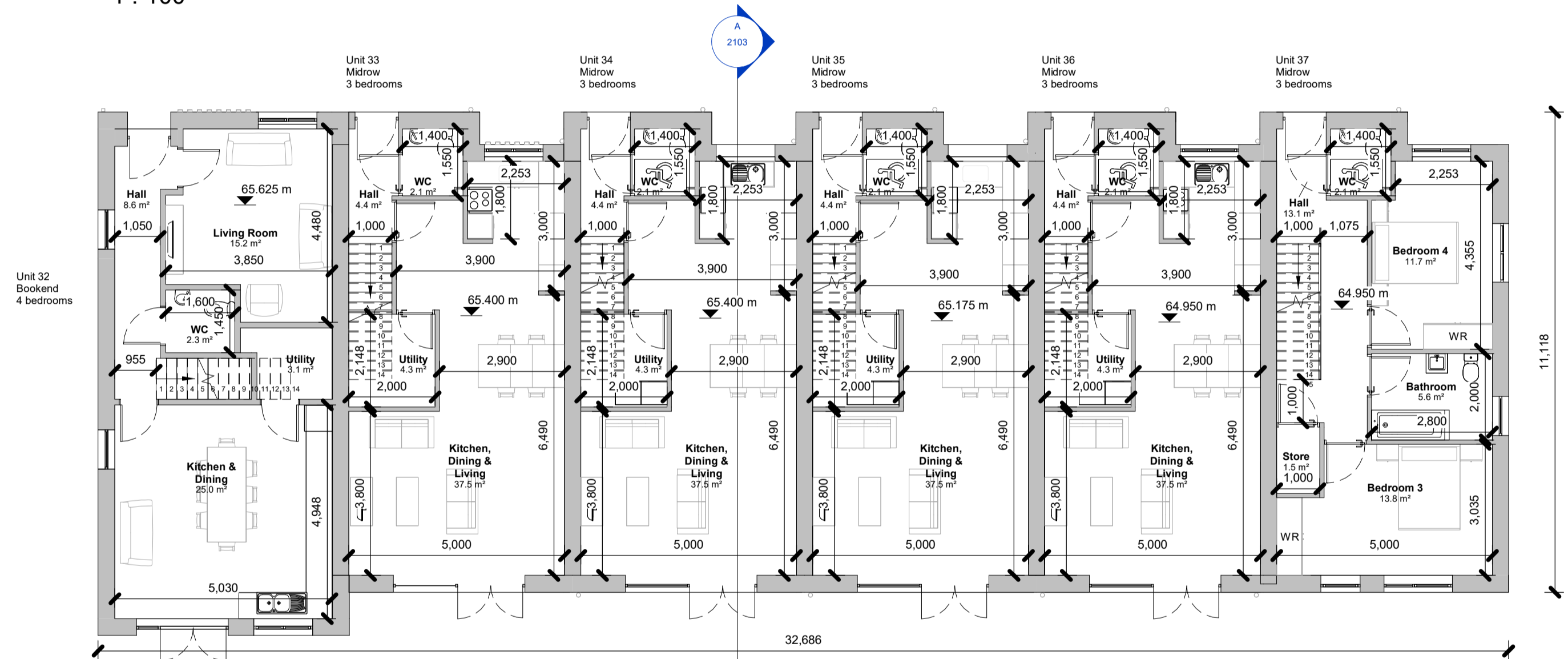


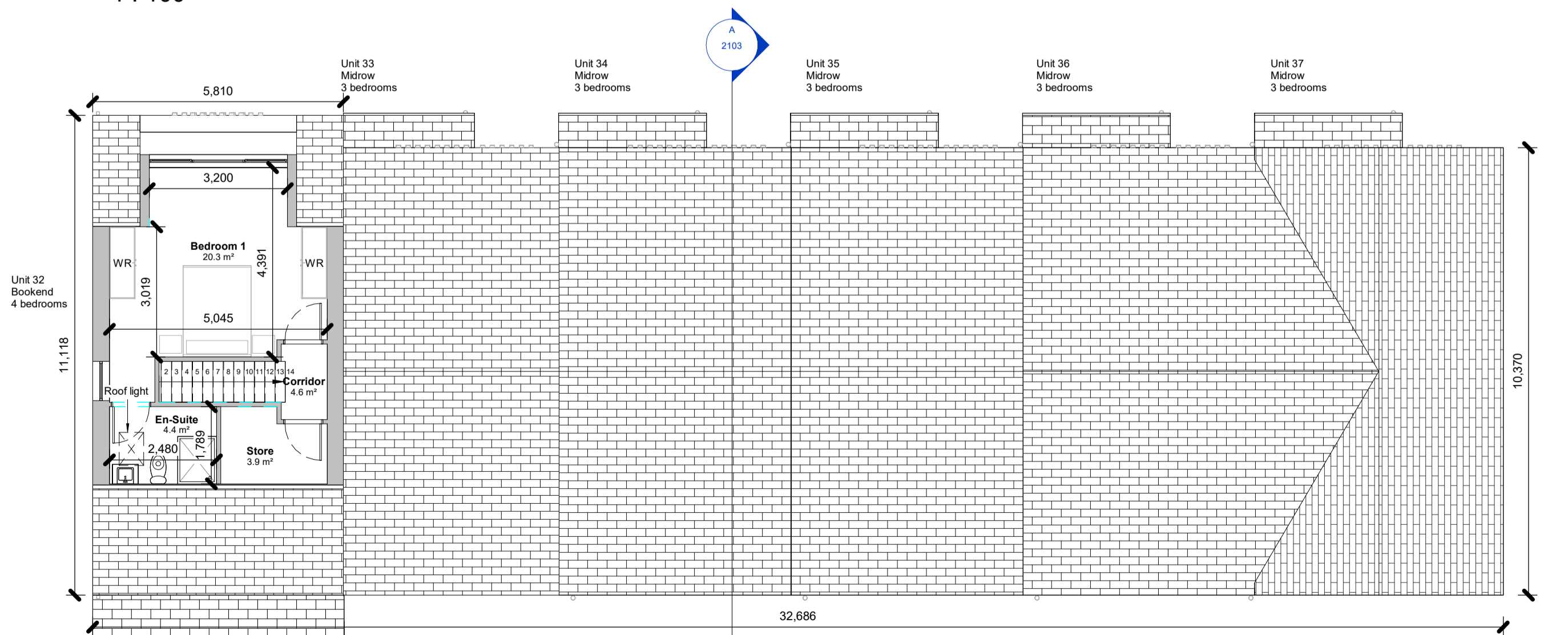
BLOCK E



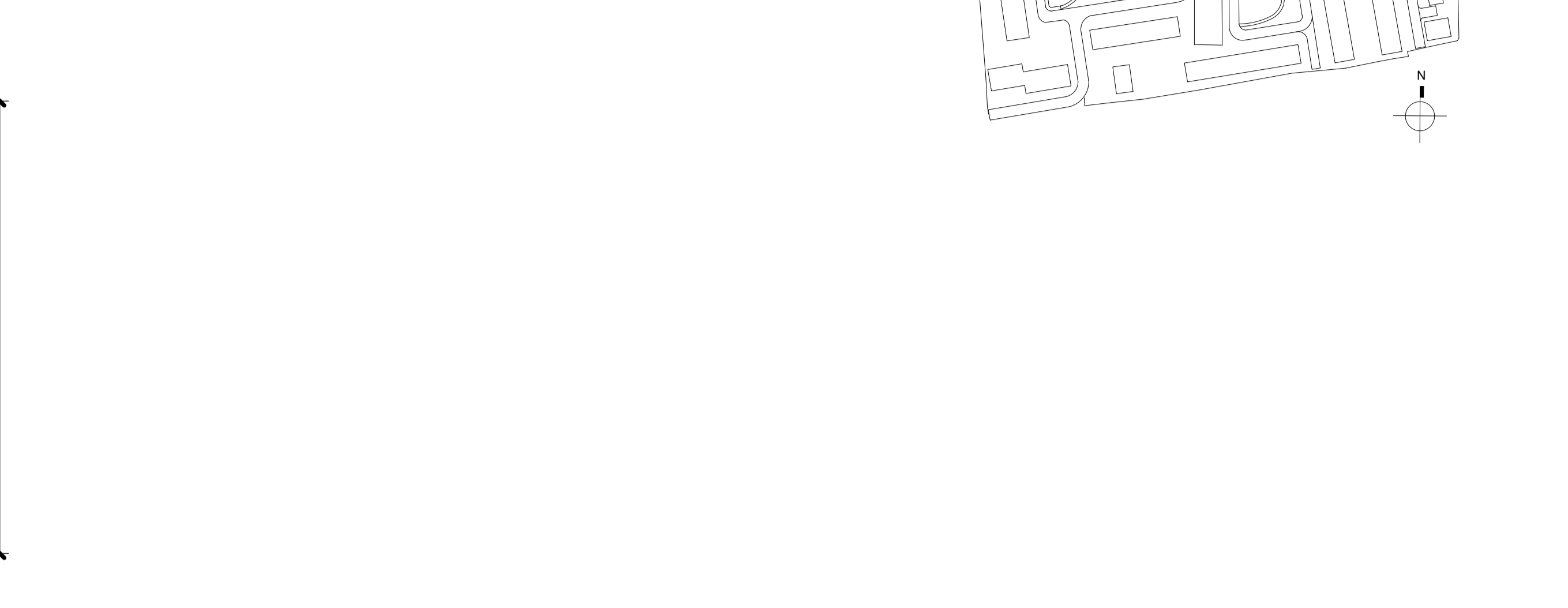
Lower Ground Floor Plan
1 : 100



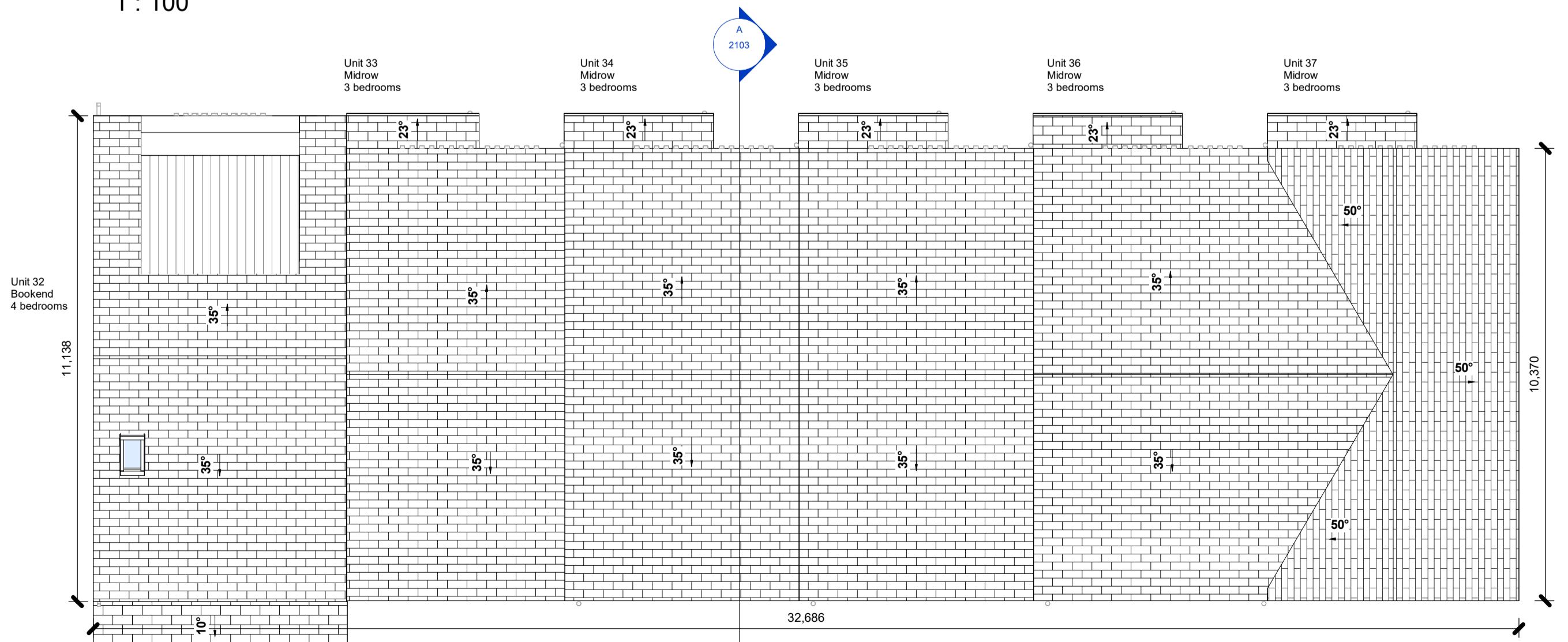
Ground Floor Plan
1 : 100



Second Floor Plan
1 : 100

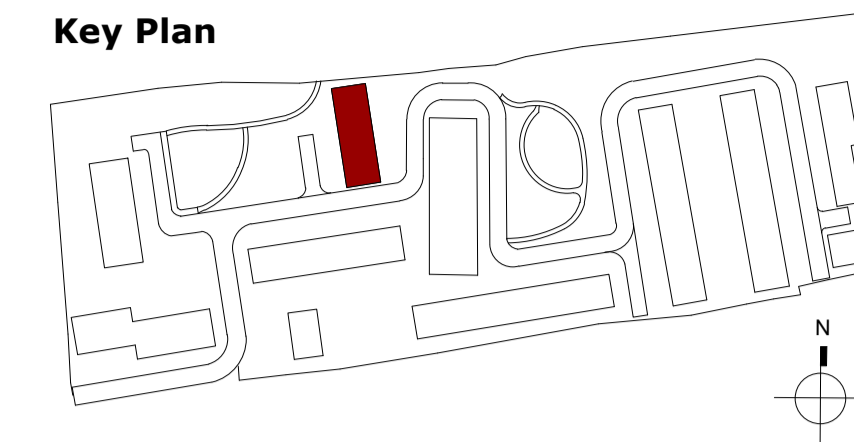


First Floor Plan
1 : 100



RF - Roof Layout
1 : 100

Key Plan



Notes:
 - Do not scale from this drawing. Use figured dimensions in all cases.
 - Verify dimensions on site and report any discrepancies to the Architect immediately.
 - This drawing is to be read in conjunction with the Architect's Specification.
 - © This drawing is copyright and may only be reproduced with the Architect's permission.

Drawing Notes:
 * For individual North point locations / orientation please refer to key plan
 * For individual floor levels please refer to site layout plan
 * Note additional storage provided in the attic

Gross Internal Floor Area	
Level	Area
UNIT 32	
L00	57.2 m ²
L01	52.1 m ²
L02	34.4 m ²
	143.8 m²
UNIT 33	
L00	49.9 m ²
L01	48.0 m ²
	97.9 m²
UNIT 34	
L00	49.9 m ²
L01	48.0 m ²
	97.9 m²
UNIT 35	
L00	49.9 m ²
L01	48.0 m ²
	97.9 m²
UNIT 36	
L00	49.9 m ²
L01	48.0 m ²
	97.9 m²
UNIT 37	
L-01	49.9 m ²
L00	49.9 m ²
L01	48.0 m ²
	147.8 m²
Total Internal Floor Areas	683.1 m²

P3-S-03	21.02.2026	LW	Issued for Planning
P3-S-02	06.08.2025	IT	Issued for Planning Permission
P3-S-01	08.11.24	IT	For Information
Rev.	Date	Drwn	Details of Issue / Revision
Issues & Revisions			



Pontorac Ltd

Proposed Residential Development at Pope's Hill, Cork

Block E - Floor Plans

Job No.	Sheet Size:	Scale @A1:
P23-288C		1 : 100
Issue Date:	Drawn By:	Reviewed By:
21.02.2026	I. Tetnowska	P. Mulligan
Status	Purpose of Issue	
P3	Planning Permission	
Project - System - Spatial Zone - Level - Type - Originator - Role - Number		
P23-288C-RAU-BE-XX-DR-A-1105		
		Revision
		P3-S-03