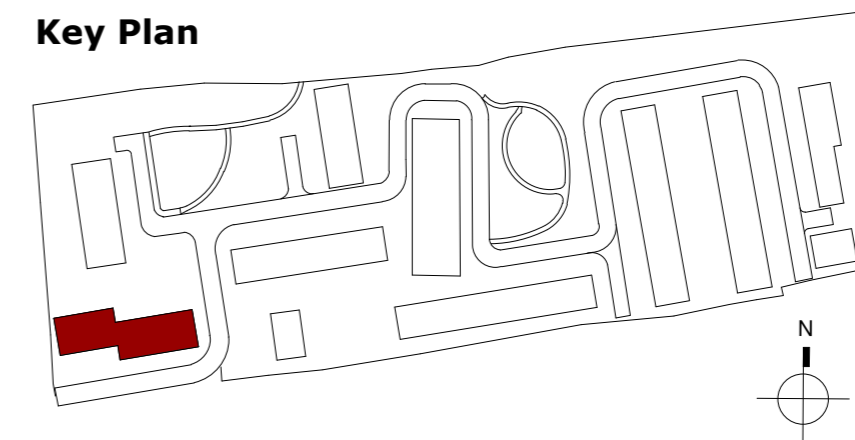


BLOCK B

Key Plan

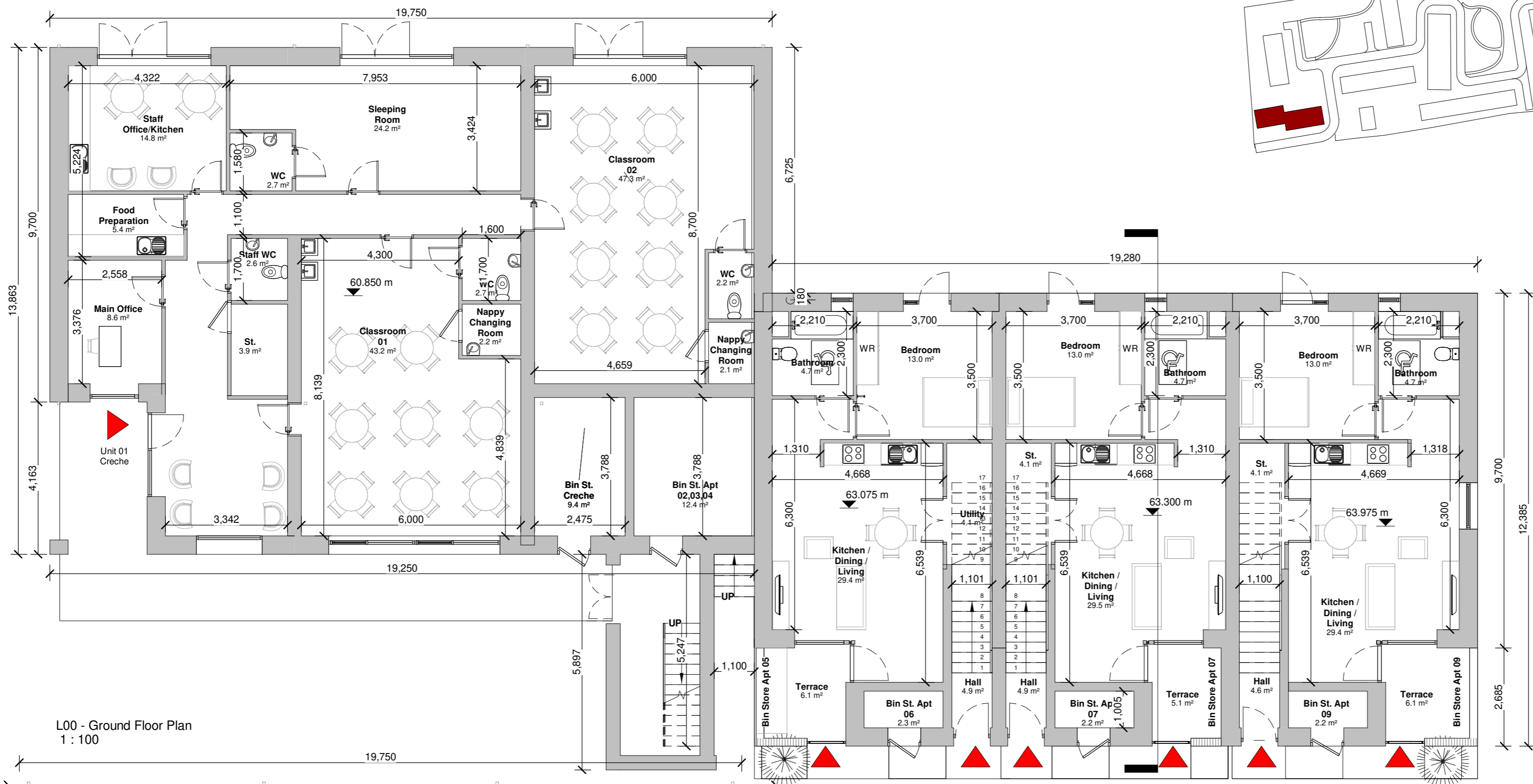


Notes:

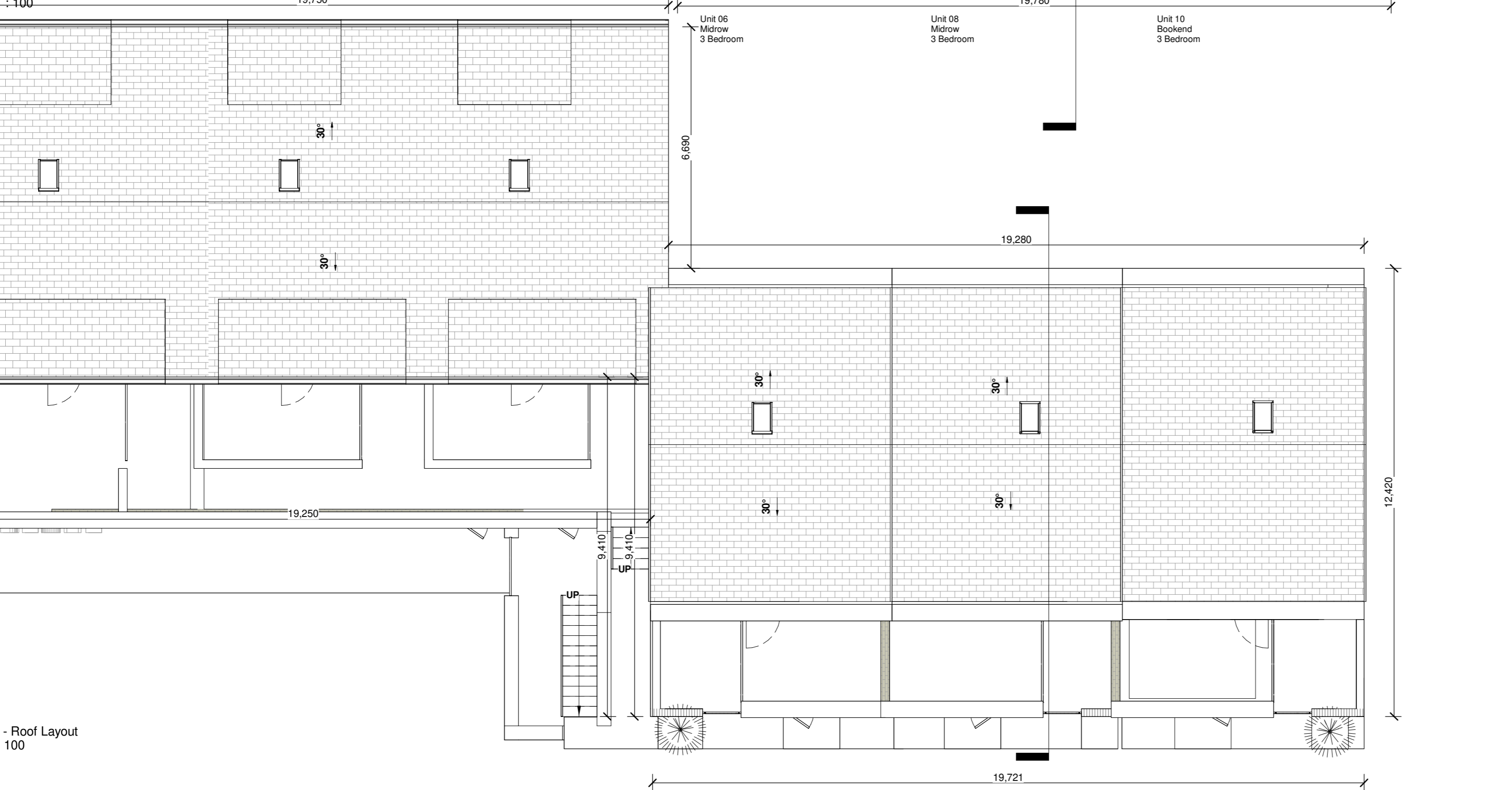
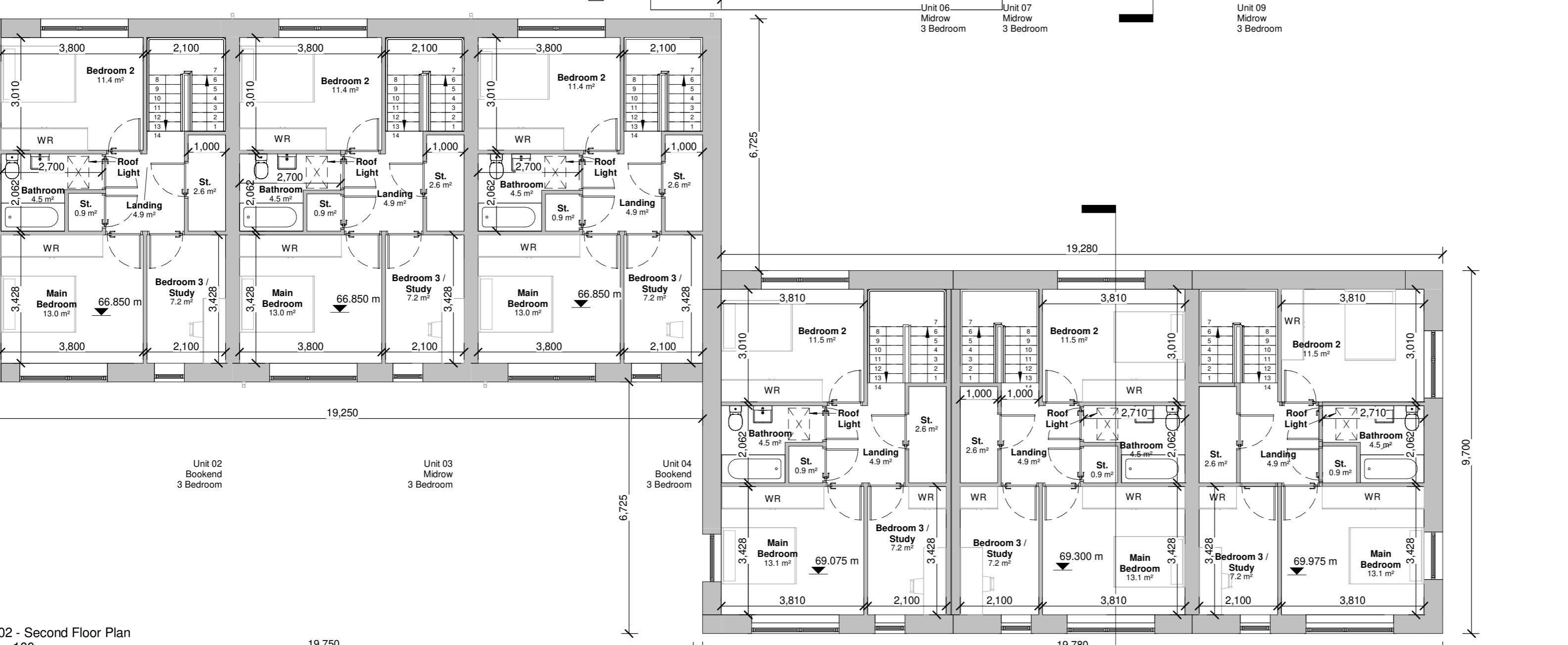
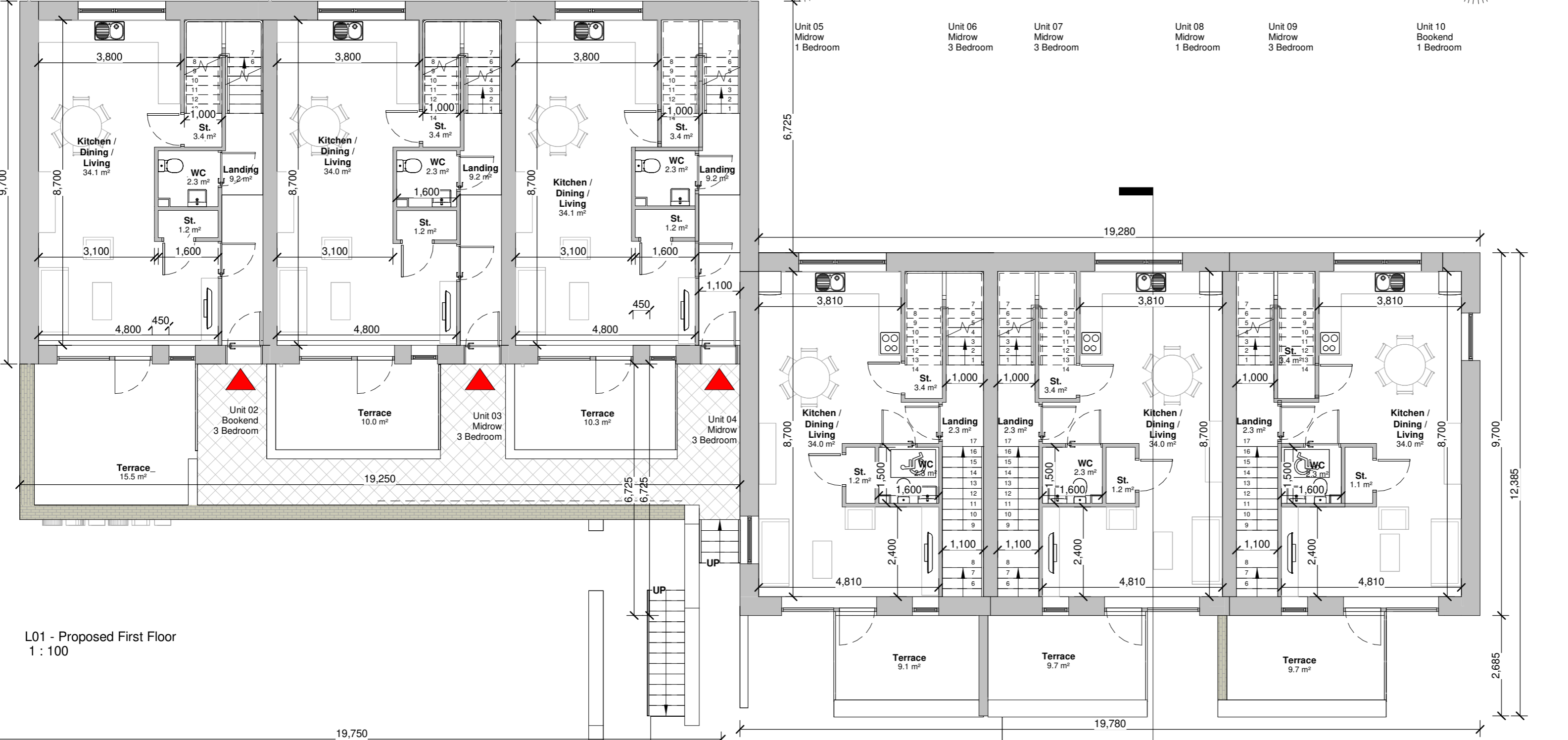
- Do not scale from this drawing. Use figured dimensions in all cases.
- Verify dimensions on site and report any discrepancies to the Architect immediately.
- This drawing is to be read in conjunction with the Architect's Specification.
- © This drawing is copyright and may only be reproduced with the Architect's permission.

Drawing Notes:

- For individual North point locations / orientation please refer to key plan
- For individual floor levels please refer to site layout plan
- Note additional storage provided in the attic



Gross Internal Floor Area	
Level	Area
UNIT 01 - CRECHE	
L00	217.4 m ²
UNIT 02	
L01	52.2 m ²
L02	52.2 m ²
UNIT 03	
L01	52.2 m ²
L02	52.2 m ²
UNIT 04	
L01	52.2 m ²
L02	52.2 m ²
UNIT 05	
L00	53.0 m ²
UNIT 06	
L00	4.5 m ²
L01	52.3 m ²
L02	52.3 m ²
UNIT 07	
L00	4.5 m ²
L01	52.3 m ²
L02	52.3 m ²
UNIT 08	
L00	53.1 m ²
UNIT 09	
L00	4.5 m ²
L01	52.3 m ²
L02	52.3 m ²
UNIT 10	
L00	53.0 m ²
L01	52.3 m ²
L02	52.3 m ²
Total Internal Floor Areas	
	1,017.1 m ²



Rev.	Date	Drawn	Details of Issue / Revision
P3-S-04	21.02.2026	IT	Issued for Planning
P3-S-03	15.10.2025	IT	Issued for Information
P3-S-02	06.08.2025	IT	Issued for Planning
P3-S-01	08.11.24	IT	Issued for Information

Issues & Revisions

Douglas Business Centre,
Carrigaline Rd,
Douglas, Cork,
T12 P088
T: +353 (0)21 436 2922
W: www.reddyarchitecture.com
E: info@reddyarchitecture.com

Client Details:
Pontorac Ltd.

Project Details:
Proposed Residential Development
at Pope's Hill, Cork

Drawing Title:
Block B - Floor Plans

Job No: **P23-288C** Sheet Size: Scale @A1: **1:100**

Issue Date: **21.02.2026** Drawn By: **IT** Reviewed By: **PM**

Status	Purpose of Issue
P3	Planning Permission

Project - System - Spatial Zone - Level - Type - Originator - Role - Number Revision

P23-288C-RAU-BB-XX-DR-A-1101 **P3-S-04**