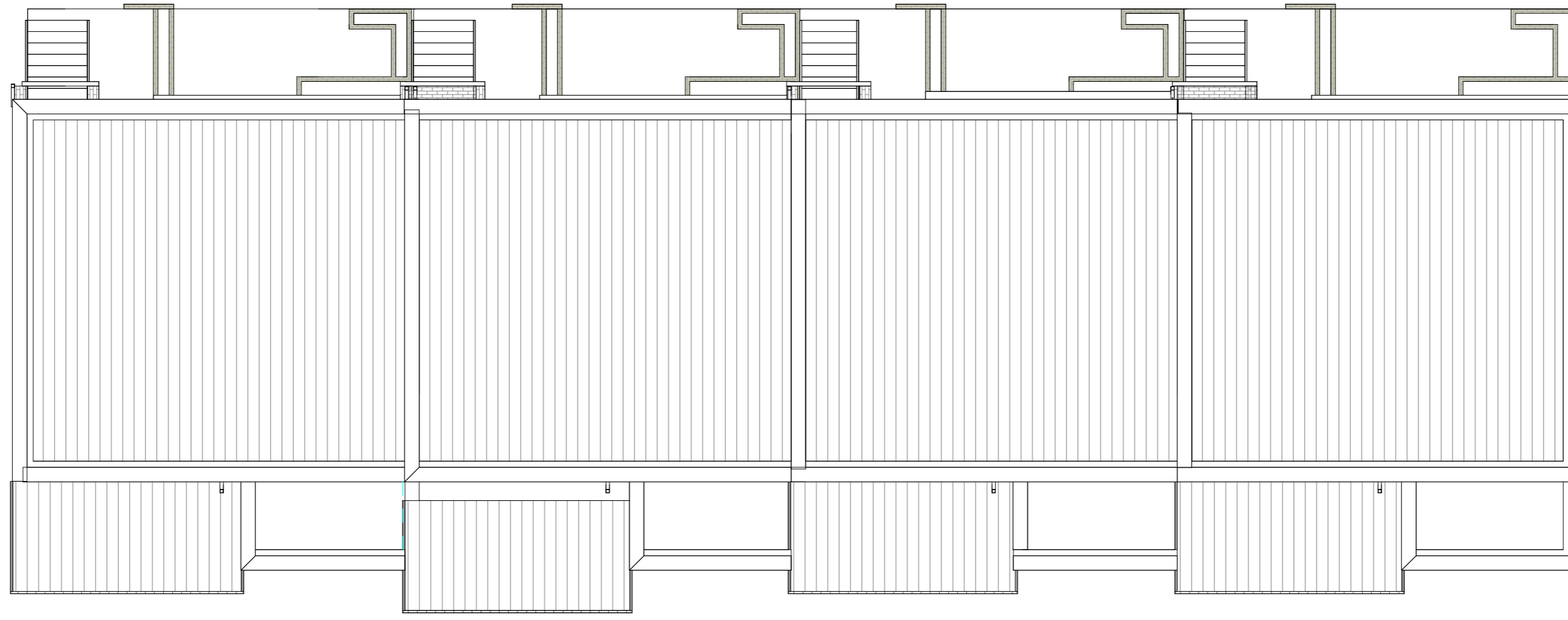


BLOCK A



RF - Roof Plan
1 : 100



Street Elevation
1 : 100



Rear Garden Elevation
1 : 100



Side Elevation
1 : 100

MATERIAL LEGEND

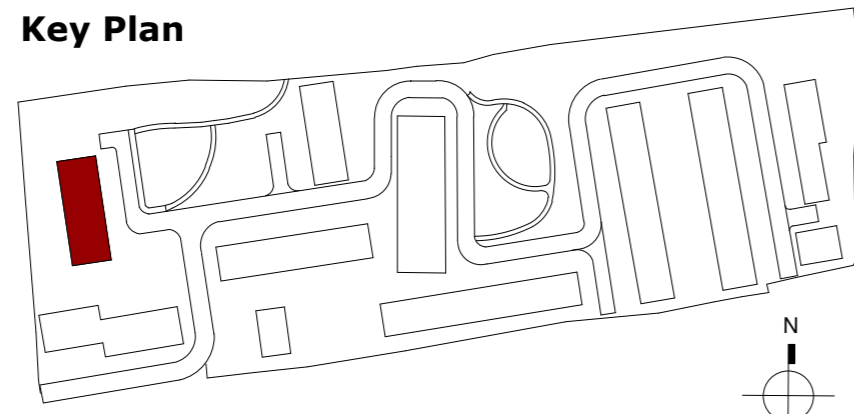
- 1 Selected aluminium / PVC window & door frames
- 2 Selected painted smooth plaster finish color TBC
- 6 Selected pressed metal finish
- 7 Selected Curtain Wall Spandrel
- 8 Selected decorative brick colour TBC
- 9 Selected PVC gutter / downpipe

Gross Internal Floor Area	
Level	Area
UNIT 14	
L00	77.3 m ²
L01	77.8 m ²
	155.0 m²
UNIT 15	
L02	60.4 m ²
	60.4 m ²
UNIT 16	
L00	77.3 m ²
L01	77.8 m ²
	155.0 m²
UNIT 17	
L02	60.4 m ²
	60.4 m ²
UNIT 18	
L00	77.3 m ²
L01	77.8 m ²
	155.0 m²
UNIT 19	
L02	60.4 m ²
	60.4 m ²
UNIT 20	
L00	77.3 m ²
L01	77.8 m ²
	155.0 m²
UNIT 21	
L02	60.4 m ²
	60.4 m ²
Total Internal Floor Areas	861.6 m²

Notes:
 - Do not scale from this drawing. Use figured dimensions in all cases.
 - Verify dimensions on site and report any discrepancies to the Architect immediately.
 - This drawing to be read in conjunction with the Architect's Specification.
 - © This drawing is copyright and may only be reproduced with the Architect's permission.

Drawing Notes:
 * For individual North point locations / orientation please refer to key plan
 * For individual floor levels please refer to site layout plan
 * Note additional storage provided in the attic

Key Plan



Issues & Revisions		
Rev.	Date	Drawn
P3-S-01	09.11.2024	IT
P3-S-02	08.08.2025	IT
P3-S-03	21.02.2026	IT



Douglas Business Park | T: +353 (0)21 436 292
 Carrigaline Rd.,
 Douglas, Cork,
 T12 P088 | W: www.reddyarchitecture.com
 E: info@reddyarchitecture.com

Client Details:
Pontorac Ltd

Project Details:
**Proposed Residential Development
 Pope's Hill, Cork**

Drawing Title:
Block A - Roof Plan, Elevations & Section

Job No: P23-288C	Sheet Size:	Scale @A1: 1 : 100
Issue Date: 21.02.2026	Drawn By: I.Tetnowska	Reviewed By: P. Mulligan
Status: P3	Purpose of Issue: PLANNING PERMISSION	
Project-Originator-Zone-Level-Type-Role-Classification-Number: P23-288C-RAU-BA-XX-DR-A-2100		Revision: P3-S-03