

**Archaeological Impact Assessment**

**Large-scale Residential Development (LRD),  
Pope's Road, Blackpool, Cork City**



*Prepared by*  
**John Cronin & Associates**  
3a Westpoint Trade Centre  
Link Road  
Ballincollig  
Cork

*On behalf of*  
**Pontorac Ltd**  
Unit 2b Parkview House  
Beech Hill Office Campus  
Clonskeagh  
Dublin 4

**April 2026**

## Document Control Sheet

<b>Client</b>	Pontorac Ltd				
<b>Project Title</b>	Large-scale Residential Development (LRD), Popes Road, Blackpool, Cork City				
<b>Document Title</b>	Archaeological Assessment				
<b>Document No.</b>	02				
<b>Document Comprises</b>	DCS	NTS	TOC	Pages	26
	Y	N	Y	Appendices	3

<b>Rev</b>	<b>Status</b>	<b>Author(s)</b>	<b>Reviewed By</b>	<b>Approved By</b>	<b>Office of Origin</b>	<b>Issue Date</b>
01	Draft	Paul Fingleton	Martin McGonigle	John Cronin	Cork	23/09/2024
02	Draft	Paul Fingleton	Martin McGonigle	John Cronin	Cork	19/08/2025
03	Final	Paul Fingleton	Martin McGonigle	John Cronin	Cork	01/04/2026

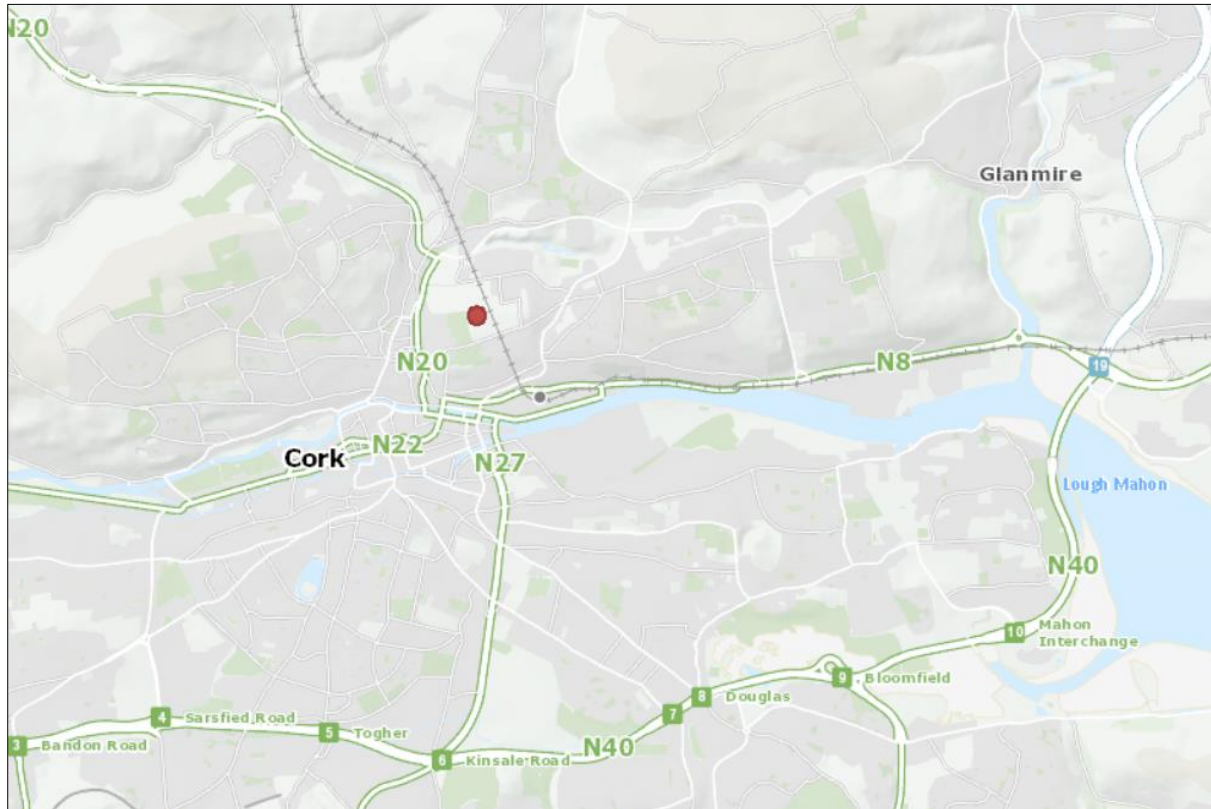
© 2026 Cultural Resource Management and Planning Ltd. 'John Cronin & Associates' is a trading name of Cultural Resource Management and Planning Ltd. All Rights Reserved. Cultural Resource Management & Planning Ltd has used reasonable skill, care and diligence in compiling this report and no warranty is provided as to the report's accuracy. Cultural Resource Management & Planning Ltd is not responsible for any errors or omissions, or for the results obtained from the use of information outlined in this report. No part of this report may be copied or reproduced, by any means, without the written permission of Cultural Resource Management & Planning Ltd.

# Contents

1. <i>Introduction</i> .....	1
2. <i>Methodology</i> .....	3
3. <i>Context</i> .....	5
4. <i>Description of site</i> .....	14
5. <i>Assessment of impact</i> .....	15
6. <i>Conclusions and recommendations</i> .....	16
7. <i>References/sources</i> .....	17
<i>Appendix 1: Photographic record</i> .....	18
<i>Appendix 2: Summaries of archaeological excavations</i> .....	21
<i>Appendix 3: Descriptions of archaeological sites in the study area (from ASI website) .....</i>	23

# 1. Introduction

John Cronin & Associates have been commissioned by **Pontorac Ltd** to undertake an archaeological impact assessment of the known and potential archaeological heritage resource within, and immediately adjacent to, lands at Pope's Road, Blackpool, Cork City (**Figure 1**).



**Figure 1:** General location of the proposed development area marked by red circle, in the northern suburbs of Cork City (Source: Government of Ireland)

This assessment is being undertaken to accompany a planning application for a Large-scale Residential Development at the site. The following is formal description of development:

*The proposed development will consist of a Large-Scale Residential Development (LRD) on a site at Pope's Hill, Pope's Road, Blackpool, Cork City which will include the demolition of a terrace of 4no. existing dwellings, 3no. of which are derelict, and ancillary sheds and their replacement with 1no. single-storey 3-bed detached bungalow accessed via a modified private driveway; and the construction of 103no. dwellings to include 50no. townhouses and 53no. duplex apartments. A total of 104no. dwellings are proposed, accessed via Pope's Road. The proposed development will also include a creche with rear garden and front set down area; 104no. car parking spaces and 128no. cycle spaces; internal roads and pathways; hard and soft landscaping, including boundary treatments; retaining walls; 2no. pedestrian connections with Glentrasna Park to the north; and all associated site development, landscaping and boundary treatment, and drainage works, including SuDS'*

The study area for this assessment comprises the area within the boundary of the subject lands, as well as lands within 500m of the site boundary. The assessment firstly outlines the methodology used in its compilation (**Section 2**) and then provides a brief archaeological and

historical context for the study area, including a summary of the relevant legal and planning framework for the recorded and potential elements of the archaeological resource within its environs (**Section 3**). The results of a site inspection are described in **Section 4**, an assessment of impact is provided in **Section 5**, while conclusions and recommendations are outlined in **Section 6**.

## 2. Methodology

This report is based on a programme of desktop research assessment as well as a site inspection.

### Desktop study

The assessment commenced with a desktop study carried out in order to identify all known archaeological sites within the study area. The principal sources reviewed for the known archaeological resource were the Sites and Monuments Record (SMR) and the Record of Monuments and Places (RMP). Between 1984 and 1992, the Archaeological Survey of Ireland (ASI) issued a series of county SMRs which lists known archaeological sites and places and this record formed the basis for the statutory RMP, established under Section 12 of the National Monuments (Amendment) Act 1994. Similar in format to the SMRs (comprising a list and set of maps), the RMPs were issued for each county in the State between 1995 and 1998. Archaeological monuments included in the statutory RMP are legally protected and are generally referred to as 'Recorded Monuments'.

The *Archaeological Survey of Ireland* (ASI) has continued to record and add entries to the SMR and has developed an online database and web viewer known as the 'Historic Environment Viewer'. This resource facilitates access to the current SMR database of the National Monuments Service as well as the National Inventory of Architectural Heritage (NIAH) (Source: <https://maps.archaeology.ie/HistoricEnvironment>).

In addition, the following sources were consulted as part of the desktop study:

- *Cartographic Sources* - The detail on cartographic sources can indicate past settlement and land use patterns in recent centuries and can also highlight the impact of modern developments and agricultural practices. This information can aid in the identification of the location and extent of unrecorded, or partially levelled, features of archaeological or architectural heritage interest. The cartographic sources examined for the study area include O'Connor's Map (1744), the first edition of the 1:10,560 (6-inch) Ordnance Survey (OS) maps (the relevant area was surveyed in 1841) and the 1:2500 (commonly referred to as '25-inch map') OS map (the relevant area was surveyed in 1901).
- *Literary Sources* - Various published literary sources were consulted in order to assess the archaeological and historical record of the study area.
- *Aerial photography* - In parallel with the cartographic study, a review of publicly-accessible aerial photographic sources from the Ordnance Survey Ireland (OSI) and Google Earth was undertaken.
- *Development Plans* - The local authority development plan relevant to the study area was consulted as part of this assessment. These plans outline the local authorities' policies for the conservation of the archaeological and architectural heritage resource and include the Record of Protected Structures (RPS) and any designated Architectural Conservation Areas (ACAs). The relevant development plan for the study area is the *Cork City Development Plan 2022-2028*.
- *Database of Irish Excavation Reports* - The Database of Irish Excavation Reports contains summary accounts of all archaeological excavations carried out in Ireland from 1969 to present.

- *UNESCO World Heritage Sites and Tentative List* - There are two world heritage sites in Ireland and a number of other significant sites have been included in a Tentative List (2022) that has been put forward by Ireland for inclusion. None of these sites are located within the environs of the study area.

## **Site survey**

A suitably qualified archaeologist (Paul Fingleton) carried out an inspection of the proposed development site on 11 July 2024. The study area was assessed in terms of historic landscape, land use, vegetation cover, presence and potential for undetected archaeological and sites or features. The results of the site inspection are detailed in **Section 4** and extracts from the photographic record are presented in the **Appendix 1** to this report.

## 3. Context

### Location

The proposed development site is located on elevated land to the north of Cork City centre. The subject lands consist of four complete fields that extends across an area measuring *circa* 2.4ha. The site is bounded by a mixture of different land uses, including residential to the north and west. A military cemetery borders the northwest side, while Collins Barracks is located on the east and southeastern edge of the subject lands.

At the time of inspection, the proposed development area consisted of heavy, grasses with thick vegetation along the perimeter. The subject lands slope very gradually from the northeast to the southwest. No surface trace of any potential archaeological features was evident during the inspection.



*Figure 2: Aerial image centred on the proposed for development (Source: Government of Ireland)*

### Legal & Policy Framework

On the 13<sup>th</sup> of October 2023, the Historic and Archaeological Heritage and Miscellaneous Provisions Bill 2023 was signed into law by President Michael D. Higgins. The new Act will repeal existing legislation and institute new provisions equipped to cater for the protection of historic heritage in a modern era.

The Act will repeal the National Monuments Acts 1930 to 2014 and replace those Acts with provisions for the protection of historic heritage, provisions for the protection of archaeological heritage, provisions for the regulation of certain activities in the interests of such protection and provisions enabling the State to ratify or accede to certain international conventions which relate to such protection or regulation; to give effect to the EIA Directive and the Habitats Directive in relation to the carrying out of works at, on, in, under, to, or within the immediate surroundings of monuments; to give further effect to the Valletta Convention; to consequentially repeal or amend

certain other enactments; to make miscellaneous amendments to the Foreshore Act 1933, the Lough Corrib Navigation Act 1945, the Planning and Development Act 2000, the Valuation Act 2001, the Local Government Act 2001, the Local Government Rates and other Matters Act 2019 and the Maritime Area Planning Act 2021; and to provide for related matters.

The Act introduces the following innovative measures:

- newly discovered archaeological sites are afforded immediate legal protection, mirroring the existing system for archaeological objects and historic wrecks that are automatically protected without a need for formal designation or registration;
- a statutory reporting scheme for finds of monuments;
- a new ‘Register of Monuments’ will be established, replacing several overlapping designation and registration systems hitherto in operation;
- “World Heritage Property” is defined for the first time in Irish legislation;
- subject to certain exceptions, archaeological objects with no known owner will automatically become the property of the State;
- the Act provides the necessary provisions to allow for the ratification of two important international treaties, the 1970 UNESCO Convention on the Means of Prohibiting and Preventing the Illicit Import, Export and Transfer of Ownership of Cultural Property, and the 1995 UNIDROIT Convention on Stolen or Illegally Exported Cultural Objects;
- the Act enables the State to ratify the 2001 UNESCO Convention on the Protection of the Underwater Cultural Heritage;
- an integrated licensing system whereby one licence can authorise a range of activities will be introduced and, for the first time, a statutory appeals process will be established to review licensing decisions, and
- a new civil enforcement procedure can be used as an alternative to, or to supplement, criminal proceedings.

The Act defines archaeology as “the study of past human societies of all periods, either as a whole or of various aspects of them, through the material remains of all forms, moveable and immoveable, left by those societies and the evidence of their environment, and includes the study of climatological, ecological, geological, geomorphological or pedological factors relevant to understanding the nature or context of those societies or the distribution or nature of their material remains, and “archaeological interest” shall be construed accordingly”.

Until such time as enabling regulation for this new legislation is issued, the National Monuments Act of 1930, and its Amendments, remain the primary means of ensuring the satisfactory protection of the archaeological resource. They include several provisions that are applied to secure the protection of archaeological monuments. These include the designations of nationally significant sites as National Monuments, the Record of Monuments and Places (RMP), the Sites and Monuments Record (SMR), and the placing of Preservation Orders and Temporary Preservation Orders on endangered sites. There are **no archaeological sites subject to Preservation Orders or Temporary Preservation Orders within the subject lands.**

Section 2 of the National Monuments Act, 1930 defines a National Monument as ‘*a monument or the remains of a monument, the preservation of which is a matter of national importance*’. The State may acquire or assume guardianship of examples through agreement with landowners or under compulsory orders. Archaeological sites within the ownership of local authorities are also

deemed to be National Monuments. There are **no National Monuments** (in the ownership or guardianship of the State) **located within the subject site or its immediate vicinity.**

The National Monuments (Amendment) Act, 1994 made provision for the establishment of the RMP, which comprises the known archaeological sites within the State. The RMP, which is based on the earlier Register of Historic Monuments (RHM) and Sites and Monuments Record (SMR), provides county-based lists of all recorded archaeological sites with accompanying maps. All RMP sites receive statutory protection under the National Monuments Act 1994 and the NMS must be given two months' notice in advance of any work proposed at their locations.

The *Cork City Development Plan 2022-2028* includes the following relevant objectives in relation to the protection of the archaeological resource:

**Objective 8.1: Strategic Archaeology Objective**

- a. To protect and preserve archaeological monuments as listed in the Sites and Monuments Record (SMR), Record of Monuments and Places (RMP) and the Wreck Inventory of Ireland Database (WIID). The National Monuments Service will be informed of all development proposals which relate to Sites and Zones of Archaeological Interest.*
- b. Cork City Council will have regard to the relevant national statutory policies and guidelines, including Frameworks and Principles for the Protection of the Archaeological Heritage and to best practice guidance documents published by the Heritage Council and the Institute of Archaeologists of Ireland.*
- d. To promote the retention, reuse, and enhancement of buildings and other elements of architectural, archaeological and other significance.*
- e. To ensure that development reflects and is sensitive to the historical importance and character of the city and its hinterland, in particular the street layout and pattern, plot sizes, building heights and scales.*
- f. To improve and encourage access to and understanding of the architectural and archaeological heritage of the city.*

**Objective 8.2: Protection of the Archaeological Resource**

- a. Cork City Council will protect and enhance the archaeological value of the sites (and their settings) listed in the Record of Monuments and Places (RMP) and the Historic Environment Viewer.*
- b. Cork City Council will ensure that development proposals will protect and preserve archaeological sites discovered since the publication of the Record of Monuments and Places (RMP).*
- c. To ensure the preservation of archaeological remains in-situ, in accordance with national policy (and in the interests of sustainability), impacts on the buried archaeological environment should be avoided where possible.*

**Objective 8.3: The Value of Archaeological Knowledge**

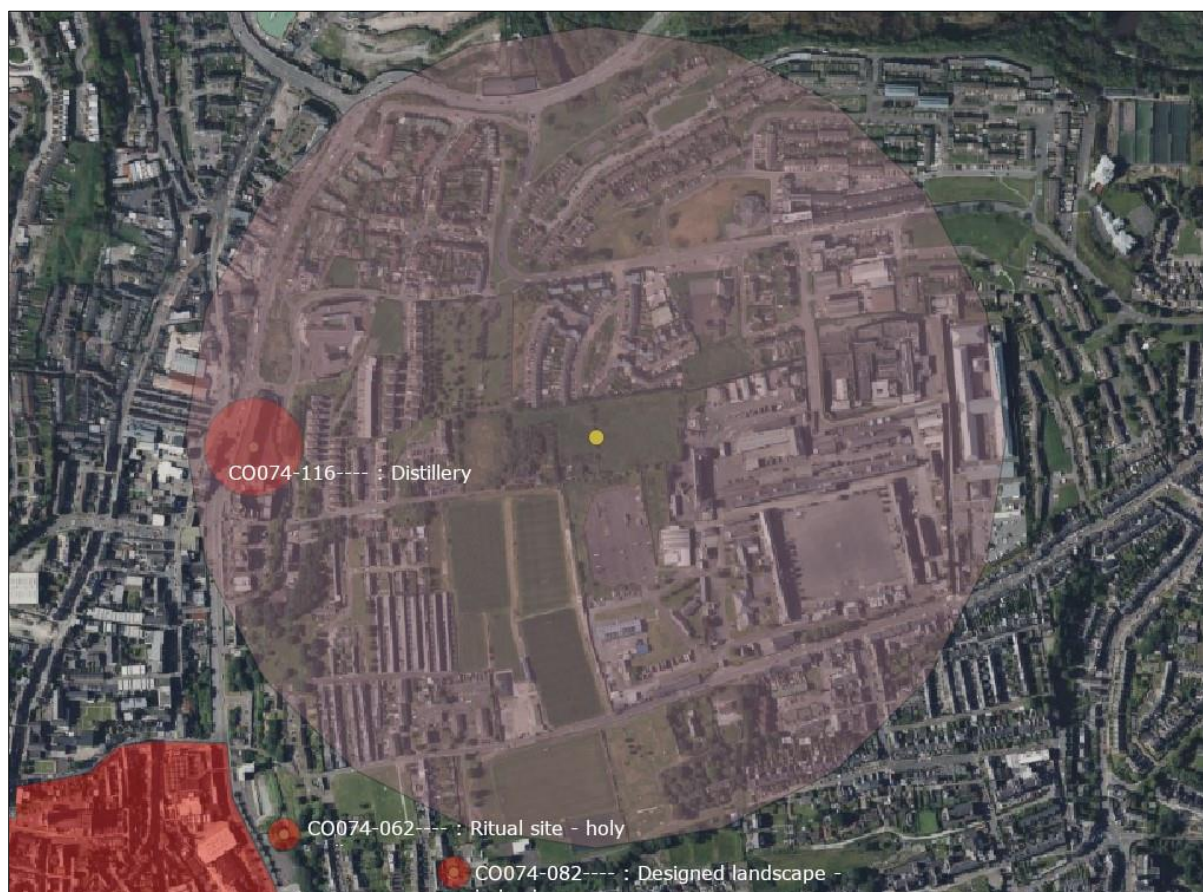
*To require that all appropriate archaeological excavation should be undertaken to the highest possible standards and the information made publicly available. The acquisition and dissemination of knowledge is a core principle for the protection of the archaeological heritage of the city. Cork City Council will endeavour to ensure public dissemination through publications and public lectures.*

## **Archaeological and historical context**

The Archaeological Survey of Ireland (ASI) lists one archaeological site, a distillery (CO074-116---), within 500m of the boundary of the subject site (**Table 1** and **Figure 4**). This site is located 240m west of the proposed development area. Immediately beyond the study area, there are a further two sites. The entry for each site is detailed in **Appendix 3** of this document.

**Table 1: Recorded archaeological sites within 500m of the proposed development**

SMR No.	Class	Townland	ITM (E)	ITM (N)
CO074-116----	Distillery	Cork City	549577	555509
Immediate vicinity of study area				
SMR No.	Class	Townland	ITM (E)	ITM (N)
CO074-062-----	Ritual site-Holy Well	Cork City	567499	572597
CO074-082----	Designed landscape - belvedere	Cork city	567706	572551



**Figure 3: Recorded archaeological sites within the study area of 500m around the subject site (Source: Government of Ireland)**

## Excavation Database

The Excavation Database ([www.excavations.ie](http://www.excavations.ie)) contains summary accounts of archaeological investigations carried out in Ireland (North and South) from 1969 to present. Since the introduction of the licensing system in 1993, licence holders are obliged to submit a summary to the Excavations Database as a condition of the issuing of the excavation licence. The Database gives access to over 30,000 reports and can be browsed or searched using multiple fields, including year, county, site type, grid reference, licence number, Sites and Monuments Record number and author.

The closest excavation to the subject lands, recorded within the database took place *circa* 130m to the southeast of the site. Licensed archaeological monitoring (License number 03E1035) was

carried out by Máire Ní Loingsigh ahead of the construction of a residential development. Nothing of archaeological significance was recorded.

In 2003, archaeological testing carried out by Sheila Lane (License number 03E0293) took place at a former tannery on Watercourse Road, located to the west of the subject site. In total, seven features were exposed including possible brick lined pits, walls, surfaces in addition to lime rich deposits all thought to be associated with the tannery were recorded.

A full description of each entry within the study are from the Excavations Database is included within **Appendix 2**.

## Historical Context

In 1609 the Corporation of Cork petitioned parliament for an extension to its boundary and Blackpool was incorporated as a suburb into the County of the City of Cork. Although early maps give little detail of the area, the early routes to Mallow and Youghal ran through the Blackpool area and it is likely the village developed around the Blackpool Bridge and later merged with the city at Shandon Street (Johnson 2006, 4). The River Bride and River Glen converged to form the Kiln River in Blackpool and the rivers was an important factor in the development of industries and the streetscape of Blackpool.

The Trade Directories of 1787 records four traders on Watercourse Road, located to the west of the subject lands, including a cotton manufacturer and a tanner; twenty years later this had increased to twelve traders including Thomas Hewitt, distiller (Johnson 2006, 16). This distillery is the recorded monument (RMP Ref. No. C0074-116---) seen in (**Figure 3**). From the mid-nineteenth century, distillers became established in urban areas close to a good supply of barley and where a source of water was available both for use in the process and as a means of power. Generally built on sites of about six to ten acres consisting of long ranges of buildings including a malt house and grain stores. Lewis writing in 1837 records that there were seven distilleries in the city and its vicinity:

*those in the former produce annually 1,400,000 gallons of whiskey and in the latter, 600,000; the whole consume 268,000 barrels of corn and employ about 1000 men: the quantity of whiskey shipped at the port in 1835 was 1279 puncheons.*

The Watercourse Distillery was established in 1792 by Thomas Hewitt and partners; Thomas Hewitt was a butter and tallow merchant who went into partnership with a London distiller named Blunt and another butter merchant named Teulon, each putting up a third of £15,000 capital (Bielenberg 1991, 71). Construction began in 1793 using local sandstone; progress was slow as the distillery was built into the hillside and involved much levelling of the site and was also hampered by a strike when work started on the malt house. This was soon resolved and the carpenters and sixteen masons were back at work by August with the distillery taking in grain that Autumn. Two large capacity stills, condensers and worms were constructed by Edgar Curtis of Bristol and production began in 1794.

According to Hewitt in 1802, it was not possible to get the work done in Cork; the company also imported all its sheet copper from Llanely in Wales (Rynne 1999, 72). The water source was a canalised section of the Glen River which was known as the Back Watercourse which provided water for Green's Distillery, a tannery, corn flour mill and Hewitt's Watercourse Distillery (Downey 2006). The buildings included a boiler and still-house containing three iron stream -

boilers; a brew-house which also contained boilers and cast metal mash-tuns; a fermenting back-house with coolers; two engine-houses with a number of boilers, a malt-house, kilns, corn-store, spirit-store, bonded spirit store and water mills. The complex faced onto Watercourse Road with stores and offices to the front and maltings, grain stores, mash house and still houses occupying the three blocks to the rear (Rynne 1999, 69). Following John Morrourh bankruptcy, the Hewitt family took over full ownership of the company.

In 1913, the plant was converted and went into production as the Cork Yeast Plant producing the Terrier brand yeast and industrial spirits using electric motors. The plant supplied yeast to most parts of Ireland and replaced the yeast previously imported from Holland. In 1916 the production of grain distillation restarted. The industrial spirits produced using both cereals and potatoes were exported and used in the production of explosives in the United Kingdom (Coakley 1919, 157). The company's name was changed to Watercourse Distillery Ltd. in 1954 and survived until the 1970s when production moved to a new distillery in Midleton. The buildings remained derelict until the 1990s when much of the site was demolished prior to the construction of the Blackpool By-pass (Townsend 2015, 69). The construction of the Blackpool By-pass in the late 1990s involved the re-routing and culverting of the watercourse. Excavations prior to construction record the watercourse as being c. 2.5m in width and 1.5m in height; a timber sluice gate and brick flooring was exposed at the junction to the Watercourse Distillery (Power 2006, 67-73).

Construction of the military barracks now located on the east and southern sides of the proposed development lands began in 1801 and were completed by 1806. This new infantry barracks held 2000 infantry men, 230 horses and a hospital for 120 men, was built by Abraham Addison Hargrave having been designed by architect John Gibson (Dictionary of Irish Architects). Originally called Cork Barracks, the barracks was renamed Victoria Barracks in the late 1800s after Queen Victoria.

During the war of independence, Victoria Barracks was a focal point for both British Forces and Irish republican activities. The barracks was a site of strategic importance and following the Anglo-Irish Treaty of 1921 and the establishment of the Irish Free State the barracks was handed over to the army of the Irish Free State in 1922. Following the civil war the barracks was renamed Collin's Barricks (Harvey & White 1997)

## **Cartographic review**

The detail on historic cartographic sources demonstrates the nature of past settlements and land use patterns in recent centuries and can also highlight the impacts of modern developments and agricultural practices. This information can aid in the identification of the location and extent of unrecorded or partially levelled features of archaeological or architectural heritage interest. The cartographic sources examined for the study area include O'Connor's Map (1744), the first edition of the 1:10,560 (6-inch) Ordnance Survey (OS) maps (the relevant area was surveyed in 1841) and the 1:2500 (commonly referred to as '25-inch map') OS map (the relevant area was surveyed in 1901).

The earliest source of mapping which includes a detailed depiction of the city of Cork and the subject lands is O'Connor's Map dating from 1774 (**Figure 4**). The general area containing the subject lands is depicted within a large open area. This map shows the poor house to the

southwest of the subject lands with Lady's Well also depicted further south and is most likely recorded site, C0074-062---- Holy well.



**Figure 4:** An extract from O'Connor's Map, dating from 1774 showing the approximate area of the subject lands, marked in red (Source: Trinity College Dublin)

The area containing the subject lands is depicted very differently on the first edition mapping (**Figure 5**), comprising five separate fields, one of which contained a structure. The field containing this structure was located to the south of the general area and was bordered by tree-lined boundaries on the north, east and west side. The field immediately north of this is depicted as a long narrow field containing trees and gardens, bisected by a path running northward possibly associated with the structure to the south.

Within the eastern half of the subject lands a suburb boundary is illustrated, showing the eastern portion the subject lands being located within the townland of Rathmore - an anglicised version of the Irish 'An Rath Mór' meaning the big fort ([logainm.ie](http://logainm.ie)).

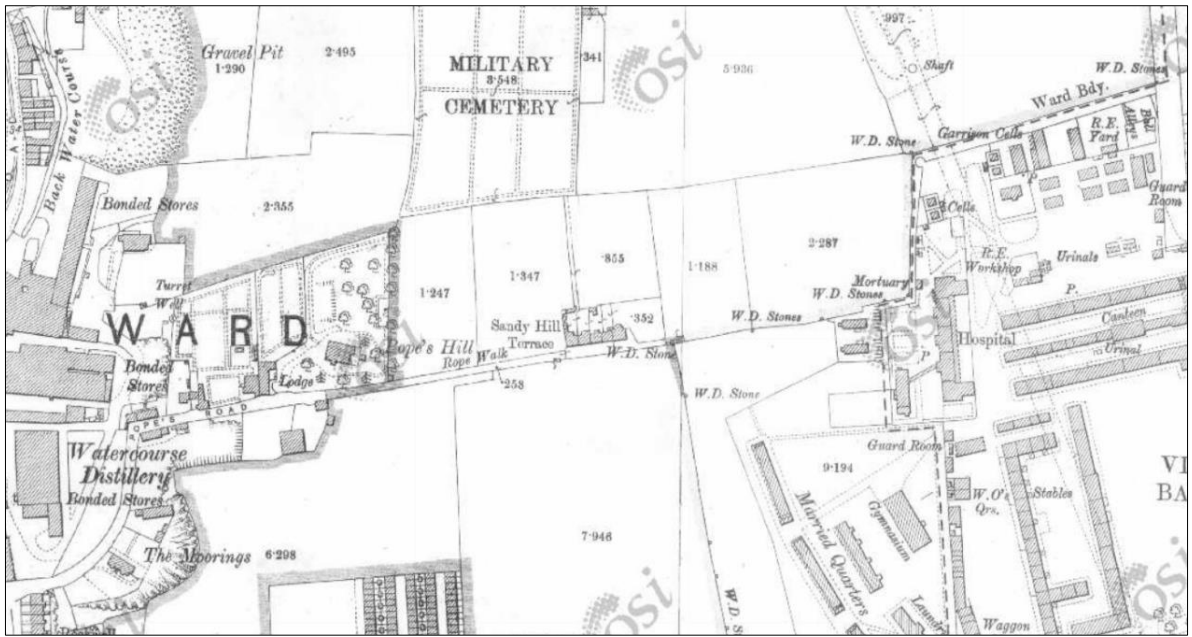
The first edition maps also shows that the area containing the subject lands was named Pope's Hill. The Watercourse Distillery, which was established in 1792 by Thomas Hewitt, is depicted to the west of this area with Victoria Barracks, now called Collin's Barracks built between 1801 and 1806, located to the immediate east of the subject lands.



**Figure 5:** Extract from the first edition 1:10,560 ('6-inch') OS map centred over the **general** area of the subject site (Source: Government of Ireland)

The field layout in the later 25-inch OS map (see **Figure 6** below) depicts the subject lands continuing to be within five fields, however the size and orientation of these fields had been altered slightly. The number of buildings on the southern side of the subject lands has increased to five and has been named 'Sandyhill Terrace'. The access road to these dwellings – now part of Pope's Road – was labelled 'Rope Walk'. As this access road is no longer depicted running up to the barracks, it seems likely that the rope being produced was for the industrial works to the west rather than for military use. The lands to the northwest now contain the Military Cemetery which is accessed from Watercourse Mill Road to the north. However, a small lane leads north from the aforementioned five houses, through the proposed development site up to the southern boundary of the graveyard. This lane was depicted within a narrow garden on the first edition map, but now forms the western boundary of that field, showing a slight increase in size of the field to the west.

A review of aerial photography of this aerial identified nothing of archaeological significance within the proposed development area.



**Figure 6:** Extract from the 25-inch OS map centred over the **general** area of the subject site (Source: Government of Ireland)

## 4. Description of site

An inspection of the subject site was undertaken on 11 July 2024 (by Paul Fingleton of John Cronin & Associates). The site was assessed in terms of historic landscape, land use, vegetation cover, presence, and potential for undetected archaeological or features.

The site is accessed from Pope's Road, via a narrow lane located along the southern side of the subject area. Weather conditions were dry and bright at the time of survey with good landscape visibility. Due to the thick vegetation at the access point of the land parcel, a full walkover was not possible. In lieu of this an aerial survey was carried out.

The subject lands consist of four fields. On the western side is a large roughly rectangular field bordered by residential dwellings to the west and stone walls on the north, south and east sides. In addition to the stone wall, the eastern boundary also contains mature trees. This field was similar to the others within the land parcel in that it contained long grasses throughout that appeared to be thicker and contained heavy bush coverage towards their perimeters.

Towards the centre of the subject lands, there is concentration of mature trees to the rear of the terrace of buildings that are not within the redline boundary of the proposed development. To the north and east of these trees is another field containing thick grass and bush coverage. This separated in part to the easternmost field within the and parcel of land by an incomplete field boundary made up of bushes and small trees.

Each of the fields within the subject lands contained heavy grass and bushes, which appeared thicker towards the boundary edges, making them unsuitable for geophysical survey in their current condition.

## 5. Assessment of impact

There are no archaeological sites (as recorded by the *Archaeological Survey of Ireland*) located within the proposed development site, the closest is a distillery which is c.205m from western edge the site boundary. Consequently, it is predicted that there will be **no predicted impact on the recorded archaeological heritage resource should the proposed development proceed.**



*Figure 7: Proposed development layout (Source: Reddy Architecture & Urbanism)*

There is potential for the existence for previously unrecorded archaeological remains to be present below the topsoil. Should the proposed development proceed, it would **directly impact** any such remains and therefore archaeological mitigation measures, outlined in **Section 6**, should be carried out to identify any such remains.

## 6. Conclusions and recommendations

### Conclusions

A desktop review and a site survey were carried out on lands proposed for a residential development at Pope's Road, Blackpool, Cork City. This study did not identify any archaeological or architectural heritage constraints within the area proposed for development, either previously recorded or unrecorded. The proposed development will have **no impact** on the known archaeological resource in the area.

It is considered that there **is moderate potential** for the existence of previously unrecorded archaeological remains to be present below the topsoil. Should the proposed development proceed, it would directly impact any such remains and therefore archaeological mitigation measures, outlined below, should be carried out to identify any such remains prior to construction.

### Recommendations

Due to the overgrown state of the subject site, a geophysical survey of the proposed development site is not feasible. The site would be required to be stripped of the mature vegetation cover should such a survey take place. In addition to this the site is currently, inaccessible to heavy plant and machinery and it would require the creation of an access point on the street boundary in order to facilitate archaeological testing.

Therefore, due to the current nature of the proposed development site, it is recommended that ***the entire site should be subject to a programme of pre-development archaeological testing.*** The scope of the testing programme should be agreed upon in consultation with the Executive Archaeologist with Cork City Council.

Should archaeological material be discovered during these investigations, then consultation should take place between Cork City Council, the National Monuments Service and the developer as to the appropriate further mitigation measures.

## 7. References/sources

- Bielenberg, A. 1991. *Cork's Industrial Revolution 1780-1880: Development Or Decline?* Cork: Cork University Press.
- Coakley, D. 1919 *Cork: its trade and commerce*. Guy and Co. Available at: <https://archive.org/details/corkitstradecomm00corkrich/page/165/mode/1up> [Accessed: 19/07/2024]
- Connor, Joseph. 1774. *A map of the city and suburbs of Cork*. Available at: <https://digitalcollections.tcd.ie/concern/works/8k71nj84x> [Accessed on 19/07/2024].
- Cork City Council. 2022. *Cork City Development Plan (2022-2028)*. Available at: <https://www.corkcity.ie/en/cork-city-development-plan/> [Accessed on 11/07/2024].
- Database of Irish Archaeological Excavations, accessed on 19/10/2023. Available at: <http://www.excavations.ie/> [Accessed on 11/07/2024].
- Downey, L. 2006 Old Blackpool, An Historical Overview. In Hurley, M.F., Johnson, G. and Brett, C. (eds) *Old Blackpool-an historic suburb*, 1-3. Cork City Council and The Heritage Council
- Government of Ireland. *Historic Environment Viewer*. Available at: <https://maps.archaeology.ie/HistoricEnvironment> [Accessed on 11/07/2024].
- Government of Ireland. 2024. *Placenames Database of Ireland*. Available at: <https://www.logainm.ie/> [Accessed on 11/07/2024].
- Government of Ireland & Tailte Éireann. 2024. *Geohive Map Viewer*. Available at: <https://webapps.geohive.ie/mapviewer/index.html>. [Accessed 11/07/2024].
- Irish Architectural Archive. 2024. *Dictionary of Irish Architects*. Available at: <https://www.dia.ie> [Accessed on 11/07/2024].
- Johnson, G. 2006 *The Blackpool Streetscape*. In Hurley, M.F., Johnson, G. and Brett, C. (eds) *Old Blackpool-an historic suburb*, 1-3. Cork City Council and The Heritage Council
- Lewis, S. 1837. *Topographical Dictionary of Ireland*. 2 Volumes, Lewis & Company, London.
- Power, C. 2006. *Excavations on Blackpool By-pass*. In M.F. Hurley, G. Johnson, and C. Brett (eds) *Old Blackpool-an historic suburb*, 1-3. Cork City Council and The Heritage Council.
- Rynne, C. 1999. *The industrial archaeology of Cork City and its environs*. Dublin: Stationery Office.
- Townsend, B. 2015. *The lost distilleries of Ireland*. Glasgow: Neil Wilson Publishing Ltd.
- Harvey, D & White, G. 1997. *The Barracks: The History of Victoria/Collins Barracks, Cork*. Cork: Mercier Press.
- Heritage Map Viewer - various interactive heritage maps. Available at: <https://heritagemaps.ie/WebApps/HeritageMaps/index.html>. [Accessed on 11/07/2024].
- UNESCO World Heritage Centre - World Heritage List. Available at: <https://whc.unesco.org/en/list> [Accessed on 11/07/2024].

## Appendix 1: Photographic record



*Plate 1: Westernmost field of subject area facing north from the southwest corner*



*Plate 2: Aerial photograph facing northeast from the southwest side of subject area*



*Plate 3: Western field of subject area, facing north*



*Plate 4: Eastern portion of subject site*



*Plate 5: Entirety of subject area, facing northeast*

## Appendix 2: Summaries of archaeological excavations

The following table outlines licenced archaeological excavations/investigations that have taken place within c.500m of proposed development. (Source: [www.excavations.ie](http://www.excavations.ie))

Site name	Licence number	Summary
Knockanuss House, Pope's Road, Cork	03E1035 Máire Ní Loingsigh	The site of a development of apartments is located on a hillside overlooking Blackpool, to the north of Cork city centre. Topsoil-stripping was monitored. Stratigraphy consisted of 0.4–0.7m of topsoil/garden soil over light orangey-brown subsoil. The topsoil contained modern household and garden rubbish, as well as tree roots. The foundations of garden walls or sheds were exposed in the north-western part of the site. No features or finds of archaeological significance were recorded.
38 John Street Upper, Cork	01E0321 Sheila Lane	Two test-trenches were opened on the site in April 2001 in advance of development. The concrete base which covered the site was removed to facilitate the excavation of the trenches. This concrete flooring had been laid directly onto bedrock. No archaeological finds or levels were noted.
46 John Street Upper, Cork	05E0357 Tony Cummins	A number of test-trenches were opened before construction of an apartment building at a development site on the east side of Shandon Hill in the northern suburbs of Cork. This site is located outside the northern end of the zone of archaeological potential surrounding Cork city and was occupied by a number of modern warehouses prior to the commencement of development. The stratigraphy consisted of a shallow deposit of modern overburden overlying the sandstone bedrock. There were no archaeological features or finds recorded during testing at this site.
Watercourse Industrial Estate, Cork	04E0008 Avril Purcell	Monitoring was carried out on the site during construction at the Watercourse Industrial Estate, Blackpool, Cork. No features or finds of archaeological significance were revealed.
Watercourse Road, Cork	03E0183 Sheila Lane	Cork Corporation requested testing in advance of a Grant of Planning for the construction of several apartments and retail and commercial units at Watercourse Road, Cork. The site lies to the north of the zone of archaeological potential for Cork city and within the zone of archaeological potential for a distillery. The development site was once a part of the extensive 18th-century Watercourse Distillery. Two features were exposed during testing, a section of drain and part of a wall, both likely to have been a part of the distillery. The remains of the grain store building destroyed by fire in the 1950s and subsequently demolished were also found.
29 Watercourse Road,	03E0293 Sheila Lane	Testing and monitoring was undertaken at the site of Dunn's Tannery, a 19th-century industrial site in the Cork suburb of Blackpool to the north of the city. Documentary and cartographic evidence indicated that lime pits, handling pits and stores were located on the east side of Watercourse Road. There were handling pits indicated in the centre of the proposed development site. Eight trenches were excavated along the footprints of the proposed house foundations. Extant buildings, a possible septic tank, sewer pipes, an underground culvert and a mechanic's inspection pit all prohibited the full excavation of the proposed trenches. The rubble content of the subsurface levels

<b>Site name</b>	<b>Licence number</b>	<b>Summary</b>
		rendered the trench sides unstable and trenches were not excavated below a depth of 2m, below which foundation levels would not go. No evidence for any features associated with the tannery was found, but it is possible that they may still remain intact below the surface of the site.
38 Watercourse Road, Cork	04E0838 Tony Cummins	The development site is located c. 100m to the north of the zone of archaeological potential surrounding Cork city. Testing was carried out following the demolition of an existing building and prior to the construction of a new retail outlet. However, following the removal of the existing building the ground levels throughout the site were found to have been extensively reduced below the natural subsoil level. A single trench was opened across the base of the demolished building, and this confirmed that the levels on the development site had been reduced to the sterile natural boulder clay.
Broad Lane, Blackpool, Cork	16744 & 07298 Daniel Noonan	Testing of the archaeological potential of a brownfield redevelopment site at Broad Lane, Great William O'Brien Street, Blackpool, Cork, was carried out. The Blackpool area has been the site of extensive industrial activity since the 18th century and several areas of industrial archaeology were uncovered during the construction of the nearby Blackpool Bypass. The development site is near SMR 74:116, the late 18th-century Watercourse Distillery. Seven trenches were mechanically excavated. Trenches 1-3 investigated Area A, the western side of the site, Trenches 4 and 5 investigated Area B, the site of bungalows 1-3, and Trenches 6 and 7 investigated Area C, the east side of the site. Area A cuts substantially into the hillside to the west of the site. Trenches 1 and 2 bottomed quickly onto bedrock. Trench 3 was in an area that was previously quarried and had been backfilled with 19th-century rubble. No finds or features of archaeological interest were uncovered in Area A. Area B contained the make-up fills of 18th- to 19th-century date associated with the construction of the rectangular structure and the later raised area to the west. No finds or features of archaeological significance were uncovered in Area B. The earliest material uncovered in Area C was the late 18th- to early 19th-century garden soil horizon uncovered in Trench 6. The later brick foundation courses of the retaining wall for the lower building that housed the former display area of the furniture centre that occupied the site were uncovered in Trench 7.
Blackpool Bypass, Cork	97E0457 Catryn Power	Archaeological monitoring of the Blackpool Bypass was completed in March 1999. In early 1999 the foundations of a substantial limestone, sandstone and red brick building with an industrial stack were recorded in the former Hewitt's Watercourse Distillery. The building was marked as 'steam mills' on the Ordnance Survey 5-inch map of 1869; however, it was identified as 'the entrance to a multi-storey grain store and kiln drying complex' in the industrial archaeology survey carried out as part of this development. On the evidence of the roof construction of a surviving part of the building, it was dated to the late 18th century (Rynne 1999, 16-17).

## **Appendix 3: Descriptions of archaeological sites in the study area (from ASI website)**

### ***Within 500m of subject site***

#### **C0074-116----**

Class: Distillery

Townland: Cork City

Description: The Archaeological Survey of Ireland (ASI) is in the process of providing information on all monuments on The Historic Environment Viewer (HEV). Currently the information for this record has not been uploaded. To access available information for research purposes please make an appointment in advance with the Archive Unit (open Fridays 10.00 am – 5.00 pm), Department of Culture, Heritage and the Gaeltacht, The Custom House, Dublin 1 D01W6XO or email [nmarchive@chg.gov.ie](mailto:nmarchive@chg.gov.ie).

### ***Immediately outside study area***

#### **C0074-062----**

Class: Ritual site - holy well

Townland: Cork City

Description: According to O Coindealbháin (1946, 161) 'the well has a very small flow of water now. There is a well-kept shrine containing a statue of the B.V.M. by the side of the well. It is not frequented on a holy well nowadays'. Shrine restored in 1981; no visible surface trace of well. See Excavations 2000, no. 127, p.44The above description is derived from the published 'Archaeological Inventory of County Cork. Volume 2: East and South Cork' (Dublin: Stationery Office, 1994). In certain instances the entries have been revised and updated in the light of recent research. Date of upload/revision: 14 January 2009Images provided by and copyright of Amanda Clarke 2016-2021 <https://holywellsorkandkerry.com/>

#### **C0074-082----**

Class: Designed landscape - belvedere

Townland: Cork City

Description: The Archaeological Survey of Ireland (ASI) is in the process of providing information on all monuments on The Historic Environment Viewer (HEV). Currently the information for this record has not been uploaded. To access available information for research purposes please make an appointment in advance with the Archive Unit (open Fridays 10.00 am – 5.00 pm), Department of Culture, Heritage and the Gaeltacht, The Custom House, Dublin 1 D01W6XO or email [nmarchive@chg.gov.ie](mailto:nmarchive@chg.gov.ie).